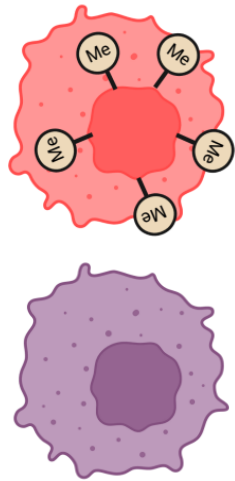
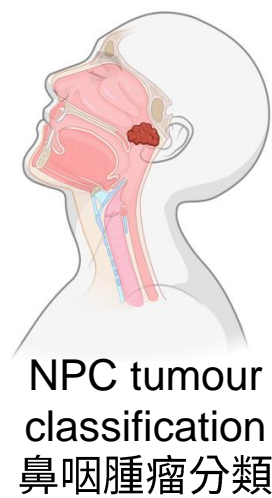


Novel Subtype of NPC
鼻咽癌的新亞型

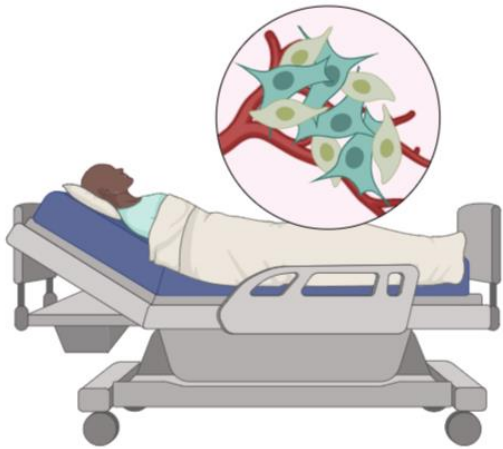
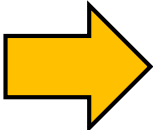


**Global DNA
Hypermethylation**
全面高度甲基化

80% of cases
80%病例

**Global DNA
Hypomethylation**
全面低度甲基化

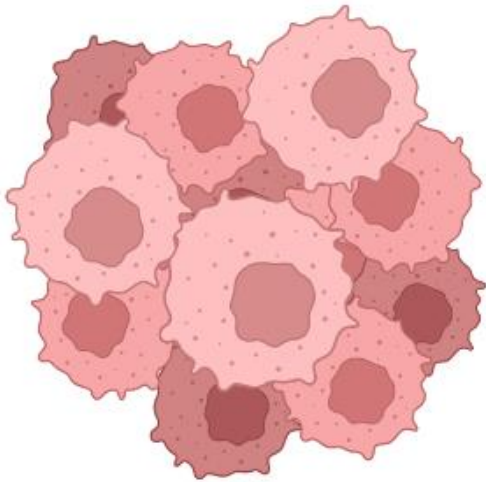
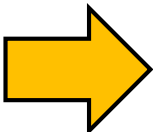
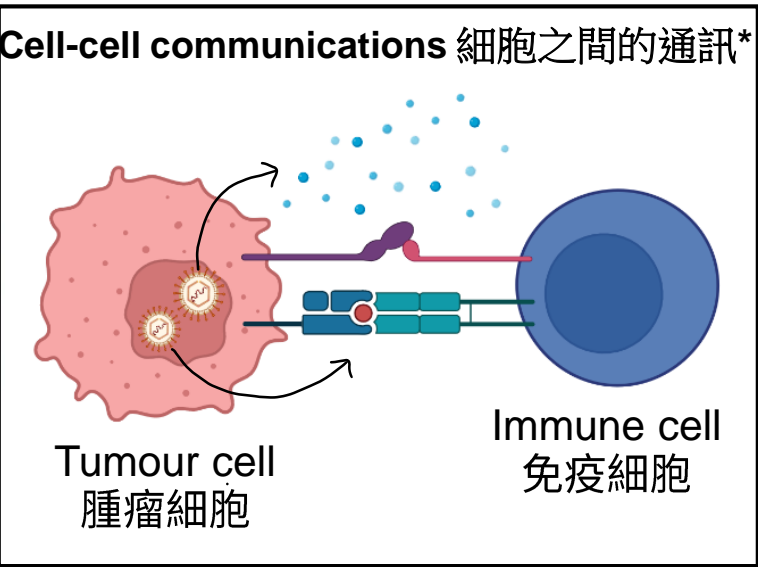
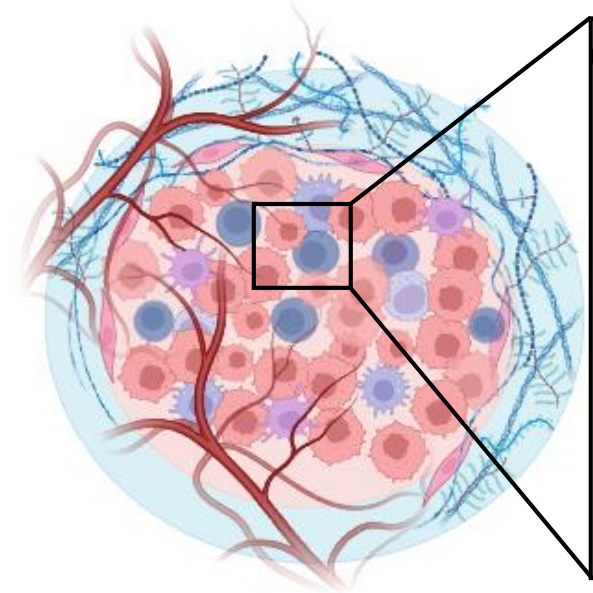
20% of cases
20%病例



Personalised medicine
個性化醫療

Patients have different subtypes
very likely have distinctive clinical
features and responses to
therapies
不同亞型的患者很可能有獨特的
臨床特徵及對治療的反應

EBV-specific immunosuppressive cell-cell communications
EB 病毒特異性的免疫抑制細胞之間的通訊



**Cancer cells easier
to survive**
癌細胞更容易存活

Immune-suppressive cell-cell
communications can be
potentially alleviated by drugs
to kill cancer
免疫抑制細胞之間的通訊很可
能被藥物緩解並殺死癌細胞

**EBV promotes immune-suppressive cell-cell
communications**
EB病毒引起抑制免疫細胞之間的通訊

*腫瘤不是單獨存在的，而是不斷地以化學物質作為媒介去向相鄰細胞接傳輸並接收以生長。