

StepOne Plus Real Time PCR System

Basic operation

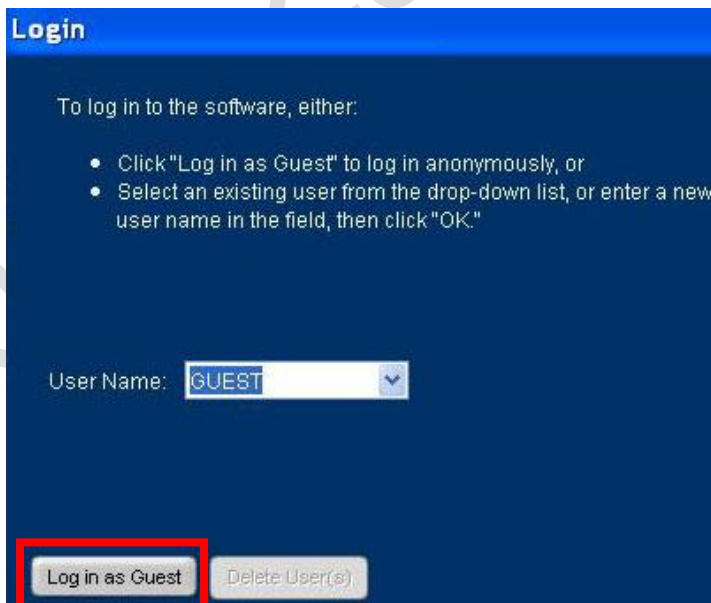
1. **Power on the instrument.** The **power switch** at the bottom left of the back of the instrument. Wait for the systems to start up, this may take up to 5 minutes.



2. Turn on the computer.
3. Open the "StepOne Software".

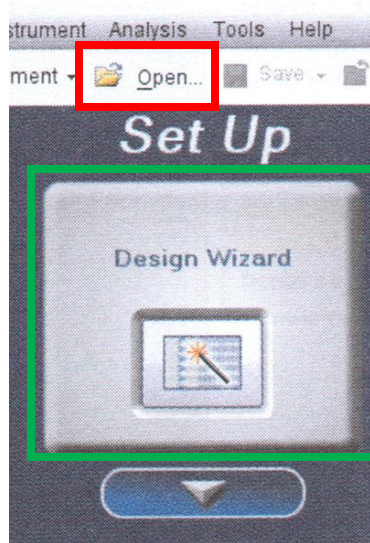


4. Select "**Login in as Guest**".



5. If you have the **experiment file**, select  **Open...** to load your experiment file from the computer or your USB drive.

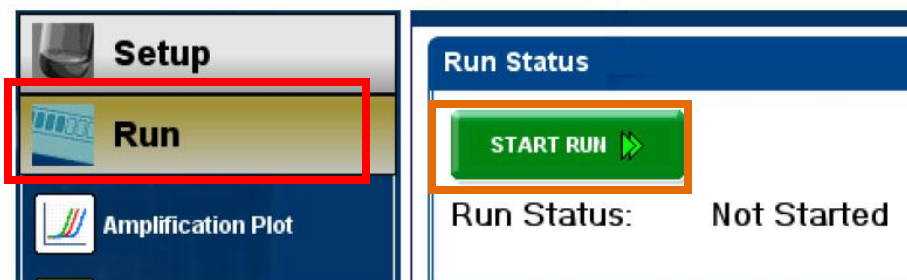
If you do not have the **experiment file**, you can design your **experiment file** using “**Design Wizard**” in the program.



6. Put your plate/tubes into the instrument. Open and close the drawer carefully.



7. Select “**Run**” in the navigation panel. Click “**START RUN**” to start your PCR run.




8. When the PCR is running, you can monitor or stop the run in the program.



9. After the run is finish, save your experiment data in the computer or to your USB drive

10. Close the “StepOne Software”.

11. **Remove your plate/tubes** from the instrument. Open and close the drawer carefully.

12. Select  in the instrument screen to switch off the instrument.

13. **Power off the instrument.** The **power switch** at the bottom left of the back of the instrument.



14. Turn off the computer.

15. Sign the **log sheet** before you leave.

End