



The University of Hong Kong




Hospital Authority Hong Kong West Cluster

**Institutional Review Board of
The University of Hong Kong /
Hospital Authority Hong Kong West Cluster
(HKU/HA HKW IRB)**

Standard Operating Procedure

Document Particulars	
Document Type	<input checked="" type="checkbox"/> SOP ^(a) <input type="checkbox"/> Guideline ^(b) <input type="checkbox"/> Working Manual ^(c)
Document Reference No.	HKU-HKW-IRB/SOP/001
Initial Issue Date	1 st April, 2014
Version No.	7
Issue Date	25 th October, 2024
Effective Date	1 st November, 2024

Approval
 _____ Professor Albert Chan Chairman Institutional Review Board of The University of Hong Kong/Hospital Authority Hong Kong West Cluster Date: 25 / 10 - 2024

- (a) A Standard Operating Procedure (SOP) is an official document outlining the necessary procedures for executing a specified task, which shall be approved by the authorized representative(s) of the organization(s) and complied with by the relevant operating unit(s) and personnel.
- (b) A Guideline is a guidance document for elaborating and facilitating compliance with the relevant SOP(s) or requirement(s), which could be approved by the authorized quality assurance specialist(s) and/or the authorized representative(s) of the organization(s).
- (c) A Working Manual is a document providing more details about execution of the required procedures under the relevant SOP(s), which could be approved by the authorized representative(s) of the operating unit(s) responsible for the task concerned and followed by the relevant operational personnel.

Version and Review History

Version No.	Review Date (DD/MM/YY)	Issue Date (DD/MM/YY)	Effective Date (DD/MM/YY)	Highlights for the Issue
1	N/A	01/04/14	01/04/14	Enforcement of this new SOP (superseding the previous SOP) for the purpose of enhancing ethics and scientific oversight of clinical studies, establishing a specific mechanism for oversight of phase 1 clinical trials, and harmonizing requirements with other research ethics committees of the Hospital Authority.
2	01/07/16	01/07/16	01/07/16	Correction of a typographic error on the Clinical Study Categorization Form (Appendix 6). The instruction for an answer of 'No' to Question 7 should be 'A' instead of '8'.
2	01/07/19	01/07/19	01/07/19	No change made. Version 2 effective date extended for 3 months pending updating.
3	01/10/19	01/10/19	01/10/19	Update the name of China Food and Drug Administration ("CFDA") to National Medical Products Administration ("NMPA") in Section 1.3.2 (a).
4	01/01/21	01/01/21	01/01/21	Revise the Term of Chairmanship in Section 4.3.2.
5	20/12/23	19/01/24	26/01/24	(1) Updating the name of ICH (1.3.1(b)); (2) Clarifying the requirements on declaration of interests (4.5.2); (3) Clarifying the SOP review frequency (7.1.2); (4) Clarifying the definition of phase 1 clinical trials (8.6.2); (5) Adjusting the SRP arrangements (8.6.5); (6) Adjusting the requirement for lead scientific reviewers (8.6.6); (7) Adjusting the terms used for classification of safety events (9.6.2); (8) Updating the list of application documents required (Appendix 5); (9) Clarifying some terms used in the Clinical Study Categorization Form (Appendix 6); (10) Correction of some typo errors.

Version No.	Review Date (DD/MM/YY)	Issue Date (DD/MM/YY)	Effective Date (DD/MM/YY)	Highlights for the Issue
6	27/06/24	25/09/24	14/10/24	<p>(1) Incorporation of the joint research ethics system and the harmonized review mechanism for multicentre clinical studies, and making corresponding adjustments to the sample notice for communicating IRB/REC's decisions (Appendix 8);</p> <p>(2) Adjusting the turnaround time for communicating with reviewers and investigators on applications/submissions;</p> <p>(3) Updating the documents required for initial review (Appendix 5);</p> <p>(4) Updating the descriptions for the electronic Clinical Research Ethics Review Portal;</p> <p>(5) Adjusting the minimum records retention period from 3 to 5 years;</p> <p>(6) Replacing all references to "subject(s)" by "participant(s)" in line with the latest research ethics practice.</p>
7	21/10/24	25/10/24	01/11/24	Delegating the primary responsibility of scientific evaluation for phase 1 trials to the Phase 1 Panels of the relevant IRB/RECs, with the assistance of a SRP if needed.

Table of Contents

Part A: Organization	7
1. Establishment, Mission and Standards.....	8
1.1 Establishment	8
1.2 Mission.....	8
1.3 Standards of Establishment and Operations.....	8
2. Governance and Collaboration.....	9
2.1 Governance Structure	9
2.2 Powers and Responsibilities of GC	10
2.3 Collaboration under the Joint Research Ethics System.....	10
3. Jurisdiction, Powers and Responsibilities	11
3.1 Activities under Jurisdiction.....	11
3.2 Powers and Responsibilities.....	13
4. Structure and Membership	14
4.1 Organizational Structure	14
4.2 Membership.....	14
4.3 Chairmanship	16
4.4 Vice/Deputy Chairmanship	17
4.5 Conflicts of Interest of Members	18
4.6 Confidentiality Obligations of Members.....	19
4.7 Training and Continuous Education for Members	19
5. Compositions and Functions of Review Panels	19
5.1 Review Panels in the IRB/REC.....	19
5.2 Standard Review Panel.....	20
5.3 Expedited Review Panel.....	20
5.4 Phase 1 Clinical Trials Review Panel	21
6. Secretariat.....	21
6.1 Accountability and Composition of Secretariat	22
6.2 Responsibilities of Secretariat	22
6.3 Confidentiality Obligations of Secretariat Staff.....	22
6.4 Training and Continuous Education for Secretariat Staff	23
7. Quality Assurance	23

7.1	Standard Operating Procedure, Guidelines and Working Manuals	23
7.2	Audits and Inspections	24
7.3	Registration with U.S. OHRP	25

Part B: Operations26

8.	Initial Review	27
8.1	Initial Review as a Mandatory Requirement	27
8.2	Application for Initial Review	27
8.3	Categorization of Clinical Studies and Assignment of Review Channels	27
8.4	Full Review by Standard Panel	28
8.5	Expedited Review by Expedited Panel	31
8.6	Full Review by Phase 1 Panel	33
8.7	Initial Review of Multicentre Studies under Harmonized Review Mechanism	38
9.	Continuous Oversight	40
9.1	Importance of Continuous Oversight	40
9.2	Regular Continuing Review	41
9.3	Review of Amendments and Changes	42
9.4	Review of New Information	43
9.5	Review of Deviations and Compliance Incidents	44
9.6	Review of Safety Reports	45
9.7	Final Review	46
10.	Study Site Auditing	47
10.1	Purpose and Types of Audits by IRB/REC	47
10.2	Conduct and Follow-up of Audits	48
11.	Reevaluation Mechanism	49
11.1	Right to Request for Reevaluation	49
11.2	Reevaluation Process	49
12.	Review Fees	49
12.1	Determination of Review Fees	49
12.2	Payment of Review Fees	50
13.	Records Management	50
13.1	Electronic Clinical Research Ethics Review Portal	50
13.2	Records Retention	50

Appendices.....	52
Appendix 1: List of Defined Terms.....	53
Appendix 2: Major Premises Covered under this SOP.....	55
Appendix 3: Organization Chart of the IRB/REC	56
Appendix 4: Persons Eligible to Nominate IRB/REC Members.....	57
Appendix 5: Documents Required for an Application for Initial Review.....	58
Appendix 6: Clinical Study Categorization Form	60
Appendix 7: Common Considerations in IRB/REC Review.....	62
Appendix 8: Sample Notice for Communicating IRB/REC's Decisions	63
Appendix 9: Safety Events Reporting Requirements	68

Part A: Organization

1. Establishment, Mission and Standards

1.1 Establishment

- 1.1.1 Establishment of IRB/REC: The Institutional Review Board of The University of Hong Kong/Hospital Authority Hong Kong West Cluster (“**HKU/HA HKW IRB**”, or “**IRB/REC**” in short) was established by The University of Hong Kong (“**HKU**”) and Hospital Authority Hong Kong West Cluster (“**HA HKW**”) in accordance with its terms of reference for overseeing research involving human participants (hereinafter referred to as “clinical studies”) undertaken by and/or conducted in the premises owned, managed and/or controlled by HKU and/or HA HKW, and/or involving patients and/or staff thereof as human participants in such clinical studies.
- 1.1.2 Background of HKU: HKU is a public university established in Hong Kong under The University of Hong Kong Ordinance (Chapter 1053 of the laws of Hong Kong), which consists currently of 10 academic faculties, including the Li Ka Shing Faculty of Medicine and the Faculty of Dentistry that are actively involved in medical research and education.
- 1.1.3 Background of HA HKW: HA HKW is one of the hospital management clusters under the Hospital Authority (“**HA**”), a statutory body established under the Hospital Authority Ordinance (Chapter 113 of the laws of Hong Kong), and is authorized by the HA to manage the hospitals, clinics and medical facilities within HA HKW and to provide medical services therein to the public.

1.2 Mission

- 1.2.1 IRB/REC’s Mission: The mission of the IRB/REC is protecting the rights, safety and well-being of human participants with respect to their participation in clinical studies through initial review and continuous oversight of such clinical studies from the ethical and scientific perspectives.

1.3 Standards of Establishment and Operations

- 1.3.1 Core Standards: The IRB/REC is established and operated primarily in compliance with:
- (a) the Declaration of Helsinki of the World Medical Association (“**Declaration of Helsinki**”);
 - (b) the International Council for Harmonization of Technical Requirements for Pharmaceuticals for Human Use Guideline for Good Clinical Practice (“**ICH GCP**”) (if applicable);

- (c) this standard operating procedure (“SOP”); and
- (d) the guideline(s) and working manual(s) of the IRB/REC (if any).

1.3.2 Standards under Accreditations or Quality Assurance Schemes: The IRB/REC will also observe and comply with the standards as required under the relevant accreditation or quality assurance schemes, such as:

- (a) China Good Clinical Practice Guideline for Drug Clinical Trials (“**China GCP**”), as required under the clinical trial organization accreditation by the National Medical Products Administration of China (“NMPA”); and
- (b) U.S. Code of Federal Regulations Title 21 Part 56 (“**21 CFR 56**”) about institutional review boards and Title 45 Part 46 (“**45 CFR 46**”) about protection of human participants, as required under the registration with the U.S. Office for Human Research Protections (“OHRP”).

1.3.3 Other Applicable Standards: In addition, in performing its responsibilities of ethics and scientific review and oversight of clinical studies, the IRB/REC may, as it deems appropriate, take reference of other applicable ethical or scientific principles, such as those set out in:

- (a) the Guideline on Ethics Oversight and Scientific Evaluation of Phase 1 Clinical Trials issued by the Consortium on Harmonization of Institutional Requirements for Clinical Research (“**CHAIR Phase 1 Guideline**”);
- (b) the Hospital Authority Guide on Research Ethics for Study Site & Research Ethics Committee (“**HA Guide**”); and
- (c) the Ethical Principles and Guidelines for the Protection of Human Subjects of Research first drafted by the U.S. National Commission for the Protection of Human Subjects of Biomedical and Behavioral Research at the Belmont Conference Center and officially created by the former U.S. Department of Health, Education, and Welfare in 1979 (“**Belmont Report**”).

1.3.4 Reference to Other Standards: For the avoidance of doubt, the above is not an exhaustive list of standards and does not prohibit the IRB/REC from complying with or taking reference of other applicable standards.

2. Governance and Collaboration

2.1 Governance Structure

2.1.1 Governance Authority: The IRB/REC is governed by HKU and HA HKW

("Governing Body(ies)"), represented by the Dean of HKU Li Ka Shing Faculty of Medicine and the Cluster Chief Executive of HA HKW .

2.1.2 Governance Enforcement: Governance of the IRB/REC is enforced through the Governance Committee ("GC") under the authorization of the Governing Body(ies).

2.1.3 Composition of GC: The GC is composed of six (6) members, including three (3) members appointed by each of HKU and HA HKW. The IRB/REC Chairman shall be an ex-officio member of the GC. The term of membership will be three (3) years. There is no restriction for reappointment.

2.2 Powers and Responsibilities of GC

2.2.1 GC's Responsibilities: The GC has the responsibilities to:

- (a) formulate the policies for ethics and scientific review and oversight of clinical studies (e.g. developing and updating this SOP);
- (b) advise the Governing Body(ies) on the governance and management of the IRB/REC (e.g. adjusting the organization structure of the IRB/REC);
- (c) ensure the continuous operation and functioning of the IRB/REC;
- (d) oversee compliance of the IRB/REC with this SOP and the relevant standards;
- (e) advise the Governing Body(ies) on allocation of resources (including human, financial and infrastructural resources) to the IRB/REC;
- (f) determine and adjust the fees for receipt of applications/submissions and performance of ethics and scientific review and oversight;
- (g) report to the Governing Body(ies) the status of operation of the IRB/REC and any significant issue with respect to the clinical studies under the IRB/REC's oversight; and
- (h) perform other duties related to oversight of the IRB/REC and clinical studies as delegated by the Governing Body(ies).

2.2.2 GC's Powers: The GC has the powers to:

- (a) interpret this SOP;
- (b) access the IRB/REC's records and documents;
- (c) audit the IRB/REC's composition, operations, records and facilities; and
- (d) exercise other authorities related to oversight of the IRB/REC and clinical studies as delegated by the Governing Body(ies).

2.3 Collaboration under the Joint Research Ethics System

2.3.1 Joint Research Ethics System: To facilitate the performance of ethics and scientific oversight of clinical studies with harmonized standards, the HA collaborates with The University of Hong Kong (“**HKU**”) and The Chinese University of Hong Kong (“**CUHK**”) under a joint research ethics system to establish and operate three research ethics committees including:

- (a) the Hospital Authority Central Institutional Review Board (“**HA Central IRB**”);
- (b) the Institutional Review Board of The University of Hong Kong/Hospital Authority Hong Kong West Cluster (“**HKU/HA HKW IRB**”); and
- (c) the Joint Chinese University of Hong Kong – New Territories East Cluster Clinical Research Ethics Committee (“**Joint CUHK-NTEC CREC**”).

The Hospital Authority Head Office Steering Committee on Research Ethics (“**HAREC**”), including representatives from the three ethics committees, was established to formulate and harmonize policies and practice with respect to ethics and scientific review and oversight of clinical studies under the joint research ethics system.

2.3.2 Harmonized Mechanism for Multicentre Clinical Studies: To harmonize and accelerate the ethics and scientific review process for clinical studies involving multiple study sites, a harmonized review mechanism was established under the joint research ethics system. The details are set out in Section 8.7.

3. Jurisdiction, Powers and Responsibilities

3.1 Activities under Jurisdiction

3.1.1 IRB/REC’s Jurisdiction: The IRB/REC shall be responsible for performing ethics and scientific review and oversight of clinical studies:

- (a) undertaken by HKU and/or HA HKW (and/or the employees/appointees/students of HKU and/or HA HKW);
- (b) conducted wholly or partially in the premises owned, managed and/or controlled by HKU and/or HA HKW, including (but not limited to) those institutions, hospitals and clinics set out in Appendix 2; and/or
- (c) involving the patients and/or employees/appointees/students of HKU and/or HA HKW as human participants.

For the avoidance of doubt, a clinical study will fall under the IRB/REC’s jurisdiction if it fulfills any or all of the above conditions, and involvement of organizations or personnel other than those referred to in Section 3.1.1(a) (e.g. an overseas university or

a private practitioner in Hong Kong) in a clinical study or performance of part of a clinical study outside the premises referred to in Section 3.1.1(b) (e.g. recruitment of participants in the community or performance of imaging assessments in a private hospital) shall not affect the IRB/REC's jurisdiction over the study. Notwithstanding the above, the IRB/REC's review and approval shall not release a principal investigator from the responsibility of obtaining other necessary approvals for his/her study (e.g. management approval from his/her institution/department, regulatory approval through the Hong Kong Department of Health, or approval by the research ethics committee of a collaborating institution if required).

3.1.2 Definition of Clinical Study: For the purpose of this SOP, a clinical study means any systematic investigation in any medical or scientific discipline with the objective of answering question(s) that may contribute to establishment of theory(ies), principle(s) or generalizable knowledge by processing, analyzing and reporting of information collected from:

- (a) human beings (e.g. randomized controlled trial on a medical product or clinical procedure, or observational study following the progression of a disease);
- (b) identifiable human materials (e.g. genetic analysis of archived human specimens); and/or
- (c) identifiable human data (e.g. medical chart review or case series).

3.1.3 Examples of Medical Products: Medical products may include:

- (a) drugs (e.g. chemical drugs, biological drugs and vaccines);
- (b) medical devices (e.g. implants, diagnostic kits and imaging machines);
- (c) Chinese/herbal medicines (e.g. proprietary/traditional Chinese medicines);
- (d) health/nutritional supplements;
- (c) cell therapies (e.g. stem cells); and
- (f) gene therapies (e.g. viral vectors).

3.1.4 Examples of Clinical Procedures: Clinical procedures may include:

- (a) clinical examinations/assessments (e.g. venipuncture);
- (b) surgical procedures (e.g. tumor resection);
- (c) nursing procedures;
- (d) physiotherapies;
- (e) occupational therapies;
- (f) psychotherapies;
- (g) behavioral therapies;

- (h) alternative therapies (e.g. acupuncture); and
- (i) diagnostic imaging methods (e.g. X-ray examination).

3.1.5 Examples of Activities Not Defined as Clinical Studies: For the avoidance of doubt, clinical studies do not include:

- (a) the use of medical products/procedures solely for the purpose of clinical care (e.g. emergency use of an unregistered drug with a patient in a life-threatening condition);
- (b) evaluation of individual patients' medical records solely for the purpose of clinical care;
- (c) investigation of clinical data for quality assurance purpose (e.g. clinical audits); and
- (d) investigation on general statistical information relating to hospital services or disease patterns (e.g. number of hospital admissions per year, year-on-year change in the number of diabetic patients attending a specialist out-patient clinic);

provided that such activities are not intended to form a part of a research project or to derive a research publication.

3.1.6 Discretion to Review Other Research Projects: Notwithstanding the scope defined under this Section 3.1, the IRB/REC shall have the discretion to accept applications for ethics and scientific review of other research projects of a healthcare nature or otherwise (e.g. anonymous health survey or research on anonymised patient data) as it deems appropriate.

3.2 Powers and Responsibilities

3.2.1 IRB/REC's Responsibilities: The IRB/REC has the responsibilities to protect the rights, safety and well-being of human participants with respect to their participation in clinical studies under its jurisdiction through:

- (a) receiving applications for initial review of clinical studies from principal investigators, performing initial ethics and scientific review of such studies, and giving its decision(s)/opinion(s) on each application;
- (b) performing continuous ethics and scientific oversight during the period of each approved clinical study and giving its decision(s)/opinion(s);
- (c) creating and maintaining necessary records with respect to ethics and scientific review and oversight of clinical studies;
- (d) reporting to the GC the status of operation of the IRB/REC and any significant

- issue with respect to the clinical studies under the IRB/REC's oversight;
- (e) allowing and facilitating audits by the GC and inspections by competent regulatory authorities;
- (f) promoting the concepts of clinical research ethics; and
- (g) performing other duties related to ethics and scientific review and oversight of clinical studies as delegated by the GC or the Governing Body(ies).

3.2.2 IRB/REC's Powers: The IRB/REC has the powers to:

- (a) request for, collect and review information, documents and materials necessary for performance of ethics and scientific review and oversight;
- (b) recommend modifications to study designs and arrangements on sound ethical or scientific basis and in line with the IRB/REC's mission;
- (c) approve or disapprove clinical studies and give other opinions with respect to the ethical and scientific aspects of such clinical studies;
- (d) suspend or terminate any approved clinical study if unacceptable risk to participants arises;
- (e) audit clinical studies to assess compliance with study protocols, the IRB/REC's requirements and other applicable standards and requirements;
- (f) disclose information of clinical studies to the GC, the Governing Body(ies) and competent regulatory authorities; and
- (g) exercise other authorities related to ethics and scientific review and oversight of clinical studies as delegated by the GC or the Governing Body(ies).

4. Structure and Membership

4.1 Organizational Structure

4.1.1 Organizational Components: The IRB/REC consists of:

- (a) a chairman ("**Chairman**");
- (b) vice/deputy chairmen ("**Vice/Deputy Chairmen**");
- (c) review panels; and
- (d) a secretariat ("**Secretariat**").

4.1.2 Organization Chart: The IRB/REC's organization chart is set out in Appendix 3.

4.2 Membership

4.2.1 Membership Composition: The IRB/REC shall consist of both genders and with a

minimum of five (5) members, including:

- (a) at least one (1) member whose primary expertise or area of interest is in medical, clinical or biological sciences or related disciplines (“**Scientific Member**”);
- (b) at least one (1) member whose primary expertise or areas of interest is not in medical, clinical or biological sciences or related disciplines (“**Non-scientific Member**”); and
- (c) at least one (1) member who is neither directly affiliated with the Governing Body(ies) nor the direct family member of any person directly affiliated with the Governing Body(ies), irrespective of the member’s primary expertise or area of interest (“**Independent Member**”).

For the avoidance of doubt, the roles of Non-scientific Member and Independent Member may be assumed by the same IRB/REC member.

- 4.2.2 Nomination of Members: The persons eligible to nominate IRB/REC members are listed on Appendix 4. All nominations shall be submitted to the **GC** for consideration and recommendation to the Governing Body(ies) for appointment. The **GC** shall recommend to the Governing Body(ies) a suitable number of candidates with a suitable mix of backgrounds and expertise as appropriate for supporting the IRB/REC’s responsibilities.
- 4.2.3 Appointment of Members: The Governing Body(ies) shall consider the candidates recommended by the **GC**. All IRB/REC members shall be appointed by the Governing Body(ies) in writing.
- 4.2.4 Term of Membership: Each term of membership will be up to three (3) years. There is no restriction for reappointment as long as a member continues to fulfill the relevant requirements.
- 4.2.5 Resignation from Membership: Each member may, at his/her own discretion, resign from the IRB/REC membership any time by notice in writing to the Chairman.
- 4.2.6 Termination of Membership: Membership of the IRB/REC may be terminated by the Governing Body(ies) anytime in writing if a member no longer fulfills the relevant requirements (e.g. the applicable conditions set out in Sections 4.2.1 and 4.7.1) or is deemed by the Governing Body(ies) unsuitable to continue to be an IRB/REC member.
- 4.2.7 Members’ Responsibilities: An IRB/REC member has the responsibilities to support accomplishment of the mission and fulfillment of the responsibilities of the IRB/REC

by contributing to ethics and scientific review and oversight of clinical studies, such as:

- (a) receiving and reviewing documents and information of clinical studies through the Secretariat;
- (b) participating in IRB/REC review meetings;
- (c) giving his/her opinions on any application, submission or issue of which he/she participated in review; and
- (d) keeping the information of clinical studies he/she reviewed confidential.

4.3 Chairmanship

4.3.1 Appointment of Chairman: The Chairman shall be a member of the IRB/REC and be appointed by the Governing Body(ies).

4.3.2 Term of Chairmanship: Each term of chairmanship will be up to three (3) years. There is no restriction for reappointment as long as the Chairman continues to be an IRB/REC member and fulfill the relevant requirements.

4.3.3 Resignation from Chairmanship: The Chairman may, at his/her own discretion, resign from the chairmanship any time by notice in writing to the Governing Body(ies).

4.3.4 Termination of Chairmanship: Chairmanship of the IRB/REC may be terminated by the Governing Body(ies) anytime in writing if the Chairman no longer fulfills the relevant requirements or is deemed by the Governing Body(ies) unsuitable to continue to be a Chairman.

4.3.5 Chairman's Responsibilities: The Chairman has the responsibilities to support accomplishment of the mission and fulfillment of the responsibilities of the IRB/REC by overseeing the IRB/REC's management and operations, such as:

- (a) assigning IRB/REC members to review panels;
- (b) managing the Secretariat;
- (c) chairing full review meetings (or delegating Vice/Deputy Chairmen to do so on his/her behalf);
- (d) reporting to the GC the status of operation of the IRB/REC and any significant issue with respect to the clinical studies under the IRB/REC's oversight;
- (e) facilitating audits by the GC and inspections by competent regulatory authorities (or delegating Vice/Deputy Chairmen or the Secretariat's staff to do so on his/her behalf);
- (f) participating in HAREC meetings (or delegating Vice/Deputy Chairmen or the Secretariat's staff to do so on his/her behalf); and

- (g) performing other duties related to ethics and scientific review and oversight of clinical studies as delegated by the GC or the Governing Body(ies).

4.3.6 Chairman's Powers: The Chairman has the powers to:

- (a) appoint Vice/Deputy Chairmen;
- (b) approve this SOP (including its future updates);
- (c) develop and approve working manuals, if needed, to facilitate accomplishment of the IRB/REC's responsibilities in line with the principles and requirements of this SOP;
- (d) exercise discretion on accepting applications for ethics and scientific review;
- (e) initiate audits of clinical studies to assess compliance with study protocols, the IRB/REC's requirements and other applicable standards and requirements;
- (f) disclose information of clinical studies to the GC, the Governing Body(ies) and competent regulatory authorities; and
- (g) exercise other authorities related to ethics and scientific review and oversight of clinical studies as delegated by the GC or the Governing Body(ies).

4.4 Vice/Deputy Chairmanship

4.4.1 Appointment of Vice/Deputy Chairmen: The Chairman may appoint any IRB/REC member as a Vice/Deputy Chairman as he/she deems fit to assist him/her to perform the Chairman's responsibilities. There is no limitation on the number of Vice/Deputy Chairmen.

4.4.2 Term of Vice/Deputy Chairmanship: Each term of vice/deputy chairmanship will be up to three (3) years. There is no restriction for reappointment as long as a Vice/Deputy Chairman continues to be an IRB/REC member and fulfill the relevant requirements.

4.4.3 Resignation from Vice/Deputy Chairmanship: A Vice/Deputy Chairman may, at his/her own discretion, resign from the vice/deputy chairmanship any time by notice in writing to the Chairman.

4.4.4 Termination of Vice/Deputy Chairmanship: Vice/Deputy chairmanship of the IRB/REC may be terminated by the Chairman anytime in writing if the Vice/Deputy Chairman no longer fulfills the relevant requirements or is deemed by the Chairman unsuitable to continue to be a Vice/Deputy Chairman.

4.4.5 Vice/Deputy Chairmen's Responsibilities: A Vice/Deputy Chairman has the responsibilities to support accomplishment of the mission and fulfillment of the

responsibilities of the IRB/REC by supporting the Chairman in overseeing the IRB/REC's management and operations, such as:

- (a) chairing IRB/REC review meetings as delegated by the Chairman;
- (b) facilitating audits by the GC and inspections by competent regulatory authorities as delegated by the Chairman;
- (c) participating in HAREC meetings as delegated by the Chairman; and
- (d) performing other duties as delegated by the Chairman to support fulfillment of the Chairman's responsibilities.

4.5 Conflicts of Interest of Members

4.5.1 Avoidance of Conflicts of Interest: Conflicts of interest and potential conflicts of interest may lead to bias in ethics and scientific review and oversight and should be avoided. An IRB/REC member's conflicting interests in a clinical study may include:

- (a) any proprietary interest in the study and/or the investigational product(s)/procedure(s) (e.g. patent);
- (b) any equity interest in an organization owning the rights to the study and/or the investigational product(s)/procedure(s) (e.g. stocks and options), except for indirect ownership through collective investment schemes (e.g. mutual funds and mandatory provident funds) in which the IRB/REC member has no control over the investment strategy;
- (c) any financial payment or valuable provided by an organization owning the rights to the study and/or the investigational product(s)/procedure(s) (e.g. donation);
- (d) any financial arrangement linking to the study and/or the investigational product(s)/procedure(s) (e.g. royalty fee);
- (e) any decision-making or influential position in an organization owning the rights to the study and/or the investigational product(s)/procedure(s);
- (f) a key role in the study team (e.g. principal investigator and co-investigator);
- (g) membership to the study's data and safety monitoring committee ("DSMC");
- (h) leadership to the department/division of any of the study's investigators (e.g. Chief of Service or Head of department/division); and
- (i) a direct family relationship with the principal investigator or any key study team member (e.g. spouse).

4.5.2 Declaration of Interest: Each IRB/REC member participating in reviewing a study shall, by completing a Declaration of Interest Form prior to the review, make a declaration of interests. Any IRB/REC member having a conflict of interest or potential conflict of

interest that may affect his/her unbiased evaluation of the study shall not participate in reviewing the study.

4.6 Confidentiality Obligations of Members

4.6.1 Members' Confidentiality Obligations: All the information disclosed to an IRB/REC member will be deemed confidential and shall not be disclosed to any third party or used for any purpose other than performing the responsibilities of an IRB/REC member, save and except for disclosure to the GC, the Governing Body(ies) or the relevant regulatory authorities.

4.6.2 Statement of Confidentiality: Upon acceptance of an appointment as an IRB/REC member, the member will be required to sign a statement of confidentiality to confirm his/her agreement to the confidentiality obligations in the IRB/REC.

4.7 Training and Continuous Education for Members

4.7.1 Core Training: IRB/REC members need to acquire knowledge in the core principles of clinical research ethics and the IRB/REC's operations, such as by training on:

- (a) the Declaration of Helsinki;
- (b) the ICH GCP;
- (c) this SOP; and
- (d) any applicable guideline or working manual issued by the IRB/REC.

4.7.2 Modes of Training: There is no restriction on the modes of training. Examples of training include participation in workshops/seminars/web-based training programs, sitting for examinations, and self-learning.

4.7.3 Continuous Education: IRB/REC members are also encouraged to receive continuous education in respect of ethics and scientific review and oversight of clinical studies.

4.7.4 Training Records: Any relevant training or continuous education received by an IRB/REC member will need to be documented. The Secretariat will have the responsibility to maintain training records for all IRB/REC members.

5. Compositions and Functions of Review Panels

5.1 Review Panels in the IRB/REC

5.1.1 Existing Review Panels: The IRB/REC's responsibilities of ethics and scientific review and oversight shall be performed by its review panels. The existing review panels

include:

- (a) a Standard Review Panel (“**Standard Panel**”);
- (b) an Expedited Review Panel (“**Expedited Panel**”); and
- (c) a Phase 1 Clinical Trials Review Panel (“**Phase 1 Panel**”).

5.1.2 Members’ Participation in Review Panels: Each IRB/REC member may be delegated to join one or more review panels.

5.1.3 Adjustment to Review Panels: The GC may, as it deems appropriate, reorganize the existing review panels, establish new review panels or make adjustments to the review panels’ compositions or functions.

5.2 Standard Review Panel

5.2.1 Standard Panel’s Responsibility: The Standard Panel is responsible for performing initial ethics and scientific review of clinical studies assigned for initial review through “Channel A” as determined by the clinical study categorization mechanism stipulated in Section 8.3, and continuing review of subsequent applications/submissions that require full review by the Standard Panel as determined by the IRB/REC according to this SOP.

5.2.2 Composition of Standard Panel: The Standard Panel shall consist of both genders and with a minimum of five (5) members, including:

- (a) at least one (1) Scientific Member;
- (b) at least one (1) Non-scientific Member; and
- (c) at least one (1) Independent Member.

For the avoidance of doubt, the roles of Non-scientific Member and Independent Member may be assumed by the same IRB/REC member.

5.2.3 Chairman’s Authority to Assign Members to Standard Panel: The Chairman and Vice/Deputy Chairmen shall be members of the Standard Panel. Subject to compliance with the minimum requirements stipulated in Section 5.2.2, the Chairman may assign any number of IRB/REC members to the Standard Panel.

5.3 Expedited Review Panel

5.3.1 Expedited Panel’s Responsibility: The Expedited Panel is responsible for performing initial ethics and scientific review of clinical studies assigned for initial review through

“Channel B” as determined by the clinical study categorization mechanism stipulated in Section 8.3, and continuing review of subsequent applications/submissions that are eligible for expedited review as determined by the IRB/REC according to this SOP.

- 5.3.2 Composition of Expedited Panel: The Expedited Panel shall consist of a minimum of three (3) members, including at least two (2) Scientific Members.
- 5.3.3 Chairman’s Authority to Assign Members to Expedited Panel: The Chairman shall be a member of the Expedited Panel. Subject to compliance with the minimum requirements stipulated in Section 5.3.2, the Chairman may assign any number of IRB/REC members to the Expedited Panel.

5.4 Phase 1 Clinical Trials Review Panel

- 5.4.1 Phase 1 Panel’s Responsibility: The Phase 1 Panel is responsible for performing initial ethics and scientific review and oversight of phase 1 clinical trials assigned for initial review through “Channel C” as determined by the clinical study categorization mechanism stipulated in Section 8.3, and continuing review of subsequent applications/submissions that require full review by the Phase 1 Panel as determined by the IRB/REC according to this SOP.
- 5.4.2 Composition of Phase 1 Panel: The Phase 1 Panel shall consist of both genders and with a minimum of five (5) members, including:
- (a) at least one (1) Scientific Member;
 - (b) at least one (1) Non-scientific Member; and
 - (c) at least one (1) Independent Member.

For the avoidance of doubt, the roles of Non-scientific Member and Independent Member may be assumed by the same IRB/REC member.

- 5.4.3 Training for Phase 1 Panel Member: Phase 1 Panel members need to acquire extra knowledge in reviewing and overseeing phase 1 clinical trials (in addition to those required under Section 4.7.1), such as by training on the CHAIR Phase 1 Guideline.
- 5.4.4 Chairman’s Authority to Assign Members to Phase 1 Panel: Subject to compliance with the minimum requirements stipulated in Sections 5.4.2 and 5.4.3, the Chairman may assign any number of IRB/REC members to the Phase 1 Panel.

6. Secretariat

6.1 Accountability and Composition of Secretariat

- 6.1.1 Accountability to Chairman: The Secretariat is directly accountable to the Chairman.
- 6.1.2 IRB/REC Secretary: The IRB/REC shall designate a staff member of the Secretariat to assume the role of an IRB/REC secretary (“**Secretary**”, irrespective of the job title assigned) who shall take charge of the Secretariat’s responsibilities and supervise other staff members of the Secretariat.
- 6.1.3 Secretariat Staff Composition: The Secretariat’s staff composition will be determined by the Chairman and the GC as they deem appropriate.

6.2 Responsibilities of Secretariat

- 6.2.1 Secretariat’s Responsibilities: The Secretariat has the responsibilities to support accomplishment of the mission and fulfillment of the responsibilities of the IRB/REC by providing professional management and administrative support to the IRB/REC and the GC, such as:
- (a) facilitating membership management (e.g. facilitating appointment of IRB/REC members, Chairman and Vice/Deputy Chairmen, and maintaining an updated membership list);
 - (b) facilitating review, updating and maintenance of this SOP and other relevant guidelines and working manuals;
 - (c) receiving applications/submissions relating to clinical studies;
 - (d) facilitating initial review of clinical study applications by the IRB/REC (e.g. setting up review meetings, preparing meeting agendas and minutes, and taking required follow-up actions);
 - (e) facilitating continuous oversight of clinical studies by the IRB/REC (e.g. collecting and arranging for review of amendments/changes, new information, deviations/compliance incidents, safety reports, progress reports and final reports);
 - (f) maintaining records of ethics and scientific review and oversight (e.g. initial applications, review meeting minutes and approval letters);
 - (g) facilitating audits by the GC and inspections by competent regulatory authorities;
 - (h) providing administrative support to the IRB/REC and the GC; and
 - (i) performing other duties related to ethics and scientific review and oversight of clinical studies as delegated by the Chairman.

6.3 Confidentiality Obligations of Secretariat Staff

- 6.3.1 Secretariat Staff’s Confidentiality Obligations: All the information disclosed to the

Secretariat's staff will be deemed confidential and shall not be disclosed to any third party or used for any purpose other than performing the responsibilities of the Secretariat, save and except for disclosure to the GC, the Governing Body(ies) or the relevant regulatory authorities.

- 6.3.2 Statement of Confidentiality: Upon acceptance of an appointment as a Secretariat staff member, the staff member will be required to sign a statement of confidentiality to confirm his/her agreement to the confidentiality obligations in the IRB/REC.

6.4 Training and Continuous Education for Secretariat Staff

- 6.4.1 Core Training: The Secretariat's key staff members need to acquire knowledge in the core principles of clinical research ethics and the IRB/REC's operations, such as by training on:

- (a) the Declaration of Helsinki;
- (b) the ICH GCP;
- (c) this SOP; and
- (d) any applicable guideline or working manual issued by the IRB/REC.

- 6.4.2 Modes of Training: There is no restriction on the modes of training. Examples of training include participation in workshops/seminars/web-based training programs, sitting for examinations, and self-learning.

- 6.4.3 Continuous Education: The Secretariat's staff members are also encouraged to receive continuous education in respect of ethics and scientific review and oversight of clinical studies.

- 6.4.4 Training Records: Any relevant training or continuous education received by a staff member of the Secretariat will need to be documented. The Secretariat will have the responsibility to maintain training records for all its staff members.

7. Quality Assurance

7.1 Standard Operating Procedure, Guidelines and Working Manuals

- 7.1.1 Approval of SOP: This SOP is approved by the Chairman. The originally signed copy shall be kept by the Secretariat.
- 7.1.2 Review of SOP: This SOP will be reviewed by reviewer(s) delegated by the Chairman or the GC about every three (3) years. Additional reviews may be performed as deemed

required by the Chairman or the GC.

7.1.3 Updating of SOP: The Chairman and the GC will duly consider the recommendations by the reviewer(s) in order to finalize an updated SOP. Whether or not any change is made to the SOP,

- (a) the version and review history at the front part of the SOP shall be updated;
- (b) the updated SOP shall be approved by the Chairman by signing on the cover page; and
- (c) the originally signed copy shall be kept by the Secretariat.

7.1.4 Guidelines and Working Manuals: The IRB/REC may, as it deems required, develop and maintain guidelines and/or working manuals to supplement this SOP. The Chairman shall have the authority to approve guidelines and working manuals. In the event of any conflict or inconsistency between a guideline/working manual and this SOP, this SOP shall prevail.

7.2 Audits and Inspections

7.2.1 Responsibility to Facilitate Audits/Inspections: The IRB/REC will allow and facilitate audits by the GC and inspections by competent regulatory authorities on the IRB/REC's composition, operations, records and facilities on reasonable request. An audit/inspection will be performed by auditor(s) delegated by the GC or by inspector(s) delegated by the competent regulatory authority.

7.2.2 Preparation for Audits/Inspections: Any request for audit/inspection shall be made to the Chairman. Upon receipt of a request, the IRB/REC will:

- (a) verify the legitimacy of the request;
- (b) designate a person to take charge of the audit/inspection;
- (c) liaise with the auditing/inspection body on the scope, schedule and arrangements for the audit/inspection;
- (d) make all necessary documents, records and materials available for the audit/inspection; and
- (e) do other preparation as needed.

7.2.3 Facilitation of Audits/Inspections: During an audit/inspection, the IRB/REC will:

- (a) confirm the identity(ies) of the auditor(s)/inspector(s) at the start of the audit/inspection;
- (b) cooperate with the auditor(s)/inspector(s) to facilitate a smooth audit/inspection;

and

- (c) monitor the auditing/inspection process and record any significant issue or finding from the audit/inspection.

7.2.4 Follow-up on Audits/Inspections: After completion of an audit/inspection, the IRB/REC will:

- (a) collect a written audit/inspection report from the auditor(s)/inspector(s);
- (b) respond to the auditing/inspection body on any issue or finding highlighted in the audit/inspection report;
- (c) take proper follow-up action(s) with respect to each issue or finding;
- (d) issue a follow-up report to the auditing/inspection body upon completion of all follow-up action(s) if so required by the auditing/inspection body; and
- (e) keep a complete record for the audit/inspection.

7.3 Registration with U.S. OHRP

7.3.1 Registration with OHRP: As required under U.S. regulations, any organization that wishes to be involved in any clinical study funded by the U.S. federal government or any U.S. governmental agencies (e.g. the U.S. National Institutes of Health (“NIH”)) must use ethics committee(s)/institutional review board(s) registered with the OHRP for review and oversight of its clinical studies. To qualify the Governing Body(ies) to participate in such U.S.-funded clinical studies, the IRB/REC has registered with the OHRP.

7.3.2 Compliance with OHRP Requirements: Under the requirement of the registration with the OHRP, the IRB/REC will need to observe and comply with the applicable requirements for registration, including:

- (a) 21 CFR 56 about institutional review boards; and
- (b) 45 CFR 46 about protection of human participants.

7.3.3 Maintenance of Registration: The IRB/REC will need to continuously maintain a valid registration, in particular:

- (a) a registration must be renewed every three (3) years; and
- (b) any change of registration information regarding the IRB/REC’s Chairman or contact person (e.g. the Secretary) must be updated within ninety (90) calendar days after the change occurs.

Part B: Operations

8. Initial Review

8.1 Initial Review as a Mandatory Requirement

- 8.1.1 Objective of Initial Review: An initial IRB/REC review is the ethics and scientific review by the IRB/REC prior to initiation of a proposed clinical study. The objective is to evaluate the ethical and scientific aspects of a proposed clinical study in order to protect the rights, safety and well-being of human participants who may or will participate in the study.
- 8.1.2 Requirement for Prior Approval: The IRB/REC's initial review and prior written approval is a mandatory requirement for initiation of any clinical study under the IRB/REC's jurisdiction as stipulated in Section 3.1.

8.2 Application for Initial Review

- 8.2.1 Principal Investigator as Applicant: Submitting an application to the IRB/REC for initial review of a clinical study is the responsibility of the study's principal investigator (who shall act as the applicant under the application). For the purpose of an application, the principal investigator of a study is the investigator who takes the final responsibility for the conduct of the study at his/her study site and shall be an employee/appointee/student of the Governing Body(ies) (irrespective of any other title assigned to him/her in the study).
- 8.2.2 Submission of Applications: All applications shall be submitted through the Secretariat. Principal investigators are required to observe the review meeting schedule and application submission deadlines announced by the IRB/REC from time to time for the purpose of time planning, and shall comply with the IRB/REC's requirements in compiling and submitting their applications.
- 8.2.3 Application Documents: Each application shall include (but not limited to) the documents required as listed on Appendix 5. The IRB/REC may request for additional documents, information or clarification as it reasonably deems required, and has the right to refuse performing an initial review if an application is incomplete and/or insufficient information is made available to the IRB/REC.
- ### **8.3 Categorization of Clinical Studies and Assignment of Review Channels**
- 8.3.1 Principles of Study Categorization: To enhance the efficiency and effectiveness of initial reviews, the IRB/REC adopts a risk categorization approach by categorizing clinical studies based on six groups of risk factors including:

- (a) involvement of human participant recruitment;
- (b) participant vulnerability;
- (c) participant assignment methods;
- (d) involvement of medical products;
- (e) involvement of clinical procedures; and
- (f) study designs.

8.3.2 Mechanism for Study Categorization and Review Channels: The detailed mechanism for categorization of clinical studies is set out on the “Clinical Study Categorization Form” set out in Appendix 6. Principal investigators are required to complete and submit the form together with each application for initial review. Upon receipt of an application, the Secretariat will assess the information on the form and arrange for initial review through one of the following review channels:

- (a) Channel A: Full review by the Standard Panel
- (b) Channel B: Expedited review by the Expedited Panel
- (c) Channel C: Full review by the Phase 1 Panel

8.3.3 Chairman’s Authority to Assign Review Channel: Notwithstanding the result of categorization under the aforesaid mechanism, the Chairman or a Vice/Deputy Chairman shall have the authority to:

- (a) re-assign an application for expedited review if the study is a multicentre study which has already been approved by any research ethics committee under the HA, and no substantial difference is anticipated with respect to protection of the rights, safety and well-being of participants whether the study is conducted by the applying principal investigator or by another approved principal investigator; or
- (b) re-assign an application for review through any of the other channels at his/her reasonable discretion.

8.3.4 Continuing Review through the Review Channels: Unless otherwise specified in this SOP, continuing review of submissions for approved clinical studies will also be performed through the aforesaid review channels in accordance with the requirements detailed in Section 9.

8.4 Full Review by Standard Panel

8.4.1 Meeting Schedule: The Standard Panel shall perform full review of applications/submissions by holding regular review meetings at a frequency as the IRB/REC determines, and ad hoc review meetings as the IRB/REC deems necessary.

The Secretariat will use its endeavors to work out and make accessible to the investigators an updated meeting schedule for the regular review meetings, together with the submission deadlines corresponding to the meetings, at least for the two (2) subsequent meetings at any point of time to facilitate time planning by investigators for their upcoming studies.

- 8.4.2 Quorum and Composition of Reviewers: The quorum for a Standard Panel review meeting is five (5) and the composition of the reviewers participating in a review meeting shall fulfill the minimum requirements as stipulated in Section 5.2.2. Each review meeting will be chaired by the Chairman or a Vice/Deputy Chairman. The Secretariat will be responsible for inviting Standard Panel members to participate as reviewers in each review meeting.
- 8.4.3 Expert Advisors: The Chairman or Vice/Deputy Chairman may, as he/she deems beneficial to the review of an application/submission, invite expert advisor(s) to participate in a review meeting or provide expert advice on an application/submission, provided that each expert advisor shall sign a statement of confidentiality. The expert advisor(s) shall not be eligible to vote for the application/submission.
- 8.4.4 Pre-meeting Review: For each application/submission assigned for full review by the Standard Panel, the Secretariat will, prior to the review meeting, send the application/submission (together with all the relevant documents) to the reviewers at least five (5) working days before the review meeting for performing pre-meeting review. The Secretariat may, at its discretion, forward the reviewers' preliminary opinions, if any, to the principal investigator for consideration before the review meeting.
- 8.4.5 Investigator's Participation in a Meeting: The Chairman or Vice/Deputy Chairman may, as he/she deems beneficial to the review of an application/submission, request a principal investigator (or his/her designee) to participate and/or present the application/submission in a review meeting.
- 8.4.6 Conduct of Meeting: The Chairman or Vice/Deputy Chairman will use his/her endeavors to facilitate a balanced discussion among the participating reviewers in order to reach an ethically and scientifically satisfactory decision on each application/submission.
- 8.4.7 Scope of Considerations: In performing a review, the reviewers will evaluate and discuss the ethical and scientific aspects of the study for the purpose of protecting the rights, safety and well-being of human participants, and in particular from six key

dimensions including:

- (a) research products/procedures;
- (b) study design;
- (c) study execution;
- (d) participants' rights;
- (e) potential research biases; and
- (f) potential liability management.

A list of common considerations corresponding to the six key dimensions is set out in Appendix 7. For the avoidance of doubt, the said list and the selected items are only provided for reference but should not be taken as an exhaustive checklist for performing a review.

8.4.8 Decision by Consensus: The Chairman or Vice/Deputy Chairman will use his/her endeavors to facilitate the panel's decision on each application/submission by thorough discussion and unanimous consensus.

8.4.9 Decision by Voting: In the event that a unanimous consensus on an application/submission cannot be reached within a reasonable period of discussion, the Chairman or Vice/Deputy Chairman may at his/her discretion call for resolution by voting. A reviewer may vote for or against an application/submission, or otherwise abstain from voting. A resolution shall be approved by majority vote of at least 75% of the reviewers who are eligible to vote for the application/submission. Any reviewer who has a conflict of interest or potential conflict of interest in an application/submission shall make a declaration and is not eligible to vote. The reviewer(s) dissenting and/or abstaining (together with the reason(s) for dissenting/abstaining) should be recorded in the minutes.

8.4.10 Types of Decisions: After reviewing an application/submission, the review panel will:

- (a) approve the application/submission, if it is deemed fulfilling all the relevant requirements of the IRB/REC;
- (b) disapprove the application/submission, if any fundamental inconsistency exists between the application/submission and the IRB/REC's requirements, and such inconsistency is deemed non-rectifiable;
- (c) request the principal investigator to modify the application/submission or to provide clarification or further information about the application/submission; or
- (d) give other opinion(s) or take other action(s) as it reasonably determines.

- 8.4.11 Resolution of Queries: In the event that a request for modification, clarification or further information is made by the review panel, the Secretariat will, as soon as possible and within ten (10) working days from the date of a review meeting (where the day of review meeting is taken as day 0), send the request to the principal investigator. The principal investigator is required to feedback on the request in writing as soon as possible. The request will be deemed satisfactorily addressed by the principal investigator if no further comment/query is made by the reviewers within a reasonable period as determined by the Secretariat. In the event that the principal investigator does not feedback on the request within ninety (90) calendar days from the date of the request, the review may be terminated by the IRB/REC. In the event that the request is not deemed by all the reviewers satisfactorily addressed by the principal investigator, further queries may be made to the principal investigator, or the application/submission may be brought up for discussion in another review meeting.
- 8.4.12 Notification of Decisions: The decision on an application/submission will be notified to the principal investigator by the Chairman or Vice/Deputy Chairman (or designee) in writing as soon as possible and within ten (10) working days after the decision is made (where the day of decision is taken as day 0). A sample notice for communicating decisions to principal investigators is set out in Appendix 8 for reference.
- 8.4.13 Documentation of Review: The Secretariat will be responsible for documenting and maintaining records for review of each application/submission, such as:
- (a) review meeting agenda;
 - (b) review meeting minutes;
 - (c) list of reviewers;
 - (d) each reviewer's conflicts of interest declaration; and
 - (e) the decision in writing (e.g. letter of approval).

8.5 Expedited Review by Expedited Panel

- 8.5.1 Review Schedule: Expedited review of an application/submission shall be performed by reviewer(s) in the Expedited Panel upon receipt of the application/submission by the Secretariat and assignment of the application/submission for expedited review by the IRB/REC as per Section 8.3.
- 8.5.2 Assignment of Reviewer(s): For each application/submission assigned for expedited review, the Secretariat will send the application/submission (together with all the relevant documents) to at least one (1) and up to three (3) reviewers in the Expedited Panel for review.

- 8.5.3 Scope of Considerations: In performing an expedited review, the reviewer(s) will evaluate the study for the purpose of protecting the rights, safety and well-being of human participants by taking into account the same ethical and scientific considerations as in a full review, and in particular the common considerations set out in Appendix 7.
- 8.5.4 Decision by Consensus: If an expedited review of an application/submission is performed by more than one reviewer, the reviewers will use their endeavors to reach a decision on the application/submission by unanimous consensus. A decision by an expedited review may be tabled or endorsed in a full review meeting as the IRB/REC deems required.
- 8.5.5 Types of Decisions: After reviewing an application/submission, the reviewer(s) will:
- (a) approve the application/submission, if it is deemed fulfilling all the relevant requirements of the IRB/REC;
 - (b) request the principal investigator to modify the application/submission or to provide clarification or further information about the application/submission;
 - (c) channel the application/submission for full review, if the reviewer(s) has/have a negative opinion on the application/submission and deem(s) a full review is needed; or
 - (d) give other opinion(s) or take other action(s) as the reviewer(s) reasonably determine(s).

In no circumstances an application/submission can be disapproved only through an expedited review.

- 8.5.6 Resolution of Queries: In the event that a request for modification, clarification or further information is made by the reviewer(s), the Secretariat will, within ten (10) working days from the date of the request (where the day of request is taken as day 0), send the request to the principal investigator. The principal investigator is required to feedback on the request in writing as soon as possible. The request will be deemed satisfactorily addressed by the principal investigator if no further comment/query is made by the reviewer(s) within a reasonable period as determined by the Secretariat. In the event that the principal investigator does not feedback on the request within ninety (90) calendar days from the date of the request, the review may be terminated by the IRB/REC. In the event that the request is not deemed by all the reviewer(s) satisfactorily addressed by the principal investigator, further queries may be made to the principal investigator, or the application/submission may be channeled for full review.
- 8.5.7 Notification of Decisions: The decision on an application/submission will be notified

to the principal investigator by the Chairman or Vice/Deputy Chairman (or designee) in writing as soon as possible and within ten (10) working days after the decision is made (where the day of decision is taken as day 0). A sample notice for communicating decisions to principal investigators is set out in Appendix 8 for reference.

8.5.8 Documentation of Review: The Secretariat will be responsible for documenting and maintaining records for review of each application/submission, such as:

- (a) the list of reviewer(s);
- (b) each reviewer's conflicts of interest declarations; and
- (c) the decision in writing (e.g. letter of approval).

8.6 Full Review by Phase 1 Panel

8.6.1 Responsibility of Phase 1 Panel: The Phase 1 Panel dedicates to undertake ethics and scientific review and oversight of phase 1 clinical trials under the IRB/REC's jurisdiction.

8.6.2 Definition of Phase 1 Clinical Trials: For the purpose of this SOP, a phase 1 clinical trial means a clinical trial on a novel chemical or biological drug not registered in Hong Kong (i.e. investigational medicinal product ("IMP")) and fulfills any of the following criteria:

- (a) A clinical trial which is designated a phase 1 clinical trial on its protocol.
- (b) A clinical trial on an IMP which is tested in humans for the first time.
- (c) A clinical trial with only human pharmacology (such as pharmacokinetics ("PK") and pharmacodynamics ("PD")), toxicity and/or safety (but not efficacy) of an IMP as its primary objective(s);
- (d) A clinical trial which is reasonably deemed by the IRB/REC a phase 1 clinical trial or equivalent to a phase 1 clinical trial from the perspective of clinical risk;

provided that, for the avoidance of doubt,

- (a) any PK, PD, bioavailability ("BA") or bioequivalence ("BE") trial on a chemical drug (i) with its active chemical entity registered in Hong Kong or any country/place in the "ICH Region"; and (ii) with the same route of administration of the corresponding chemical drug registered in Hong Kong or any country/place in the "ICH Region"; shall not be regarded as a phase 1 trial under this SOP; and
- (b) any clinical trial on a biosimilar that is not registered in Hong Kong and fulfills the criteria under this Section 8.6.2 shall be regarded as a phase 1 trial under this SOP;

where the “**ICH Region**” refers to the corresponding countries/regions of the ICH’s founding regulatory members, standing regulatory members and regulatory members.

- 8.6.3 Meeting Schedule: Review of an application/submission for a phase 1 clinical trial will be performed upon receipt of the application/submission by the Secretariat and assignment of the application/submission for full review by the Phase 1 Panel as per Section 8.3.
- 8.6.4 Scientific Review by SRP: If deemed beneficial to the evaluation of a phase 1 clinical trial, the Phase 1 Panel may, at its discretion, refer the application/submission for scientific review by a Scientific Review Panel (“**SRP**”) to be formed under the Joint Scientific Committee for Phase 1 Clinical Trials (“**JSC**”) established and operated by the Consortium on Harmonization of Institutional Requirements for Clinical Research (“**CHAIR**”). The IRB/REC may:
- (a) form a Scientific Review Panel (“**SRP**”) in accordance with Section 8.6.5 to perform scientific review of the application/submission; or
 - (b) in case the application/submission has already been evaluated by a SRP formed by another IRB/REC in accordance with the JSC’s SOP, request for that SRP’s written recommendations from another IRB/REC (instead of forming another SRP as required under Section 8.6.4(a)), subject to completion of a separate Declaration of Interest Form by each SRP member (as required under Section 8.6.5).

For the avoidance of doubt, a SRP only provides its recommendations to the Phase 1 Panel on the scientific aspects of a clinical study but does not itself approve or disapprove an application/submission.

- 8.6.5 Formation of SRP: A SRP shall be composed of at least three (3) members. For each application/submission assigned for full review by the Phase 1 Panel, the Secretariat will, on behalf of the Phase 1 Panel, invite any one (1) member from the JSC to be the lead scientific reviewer. The IRB/REC will then recommend to the lead scientific reviewer a minimum of two (2) other members from the JSC as scientific reviewers to form a SRP for the study. In the event that the IRB/REC is unable to identify sufficient number of suitable and available scientific reviewers from the JSC, the IRB/REC may recommend suitable candidate(s) to CHAIR for consideration for appointment as JSC member(s). Any JSC member having a conflict of interest or potential conflict of interest that may affect his/her unbiased review of the study shall not participate in the scientific review. To facilitate an invited JSC member to assess if he/she has a conflict

of interest or potential conflict of interest in the study, the Secretariat will provide basic information about the study including at least:

- (a) the name of the study's sponsor(s) or coordinating organization(s);
- (b) the name or identifying code of the investigational product; and
- (c) the name of the principal investigator and other key study team members.

8.6.6 Transfer of Documents to SRP: Upon formation of a SRP, the Secretariat will provide to each scientific reviewer a scientific review package (by courier, electronic mail, facsimile or otherwise) including the relevant scientific information in the application/submission, such as:

- (a) the completed clinical research ethics review application form;
- (b) the study protocol;
- (c) the investigator's brochure and/or other documents detailing the nature, properties, pre-clinical data and, if available, human data about the investigational product;
- (d) the principal investigator's updated curriculum vitae; and
- (e) a scientific reviewer's conflicts of interest declaration form.

8.6.7 Conduct of Scientific Review by the SRP: The SRP will perform scientific review of an application/submission based on the JSC's SOP and the relevant parts of the CHAIR Phase 1 Guideline. The SRP may, as it deems beneficial to the scientific review, request for a meeting with the principal investigator (or his/her designee).

8.6.8 Recommendations by SRP: The Secretariat will use its endeavors to solicit the SRP's recommendations (or otherwise the SRP's request for additional information or clarification) through the lead scientific reviewer within fourteen (14) calendar days from the day of dispatch of the scientific review package to the scientific reviewers (where the day of dispatch is taken as day 0). In the event that the SRP requests for additional information or clarification, the Secretariat will use its endeavors to collect and provide such additional information or clarification to the SRP as soon as reasonably practicable, and further follow up with the SRP within fourteen (14) calendar days from the day of dispatch of such additional information or clarification to the scientific reviewers (where the day of dispatch is taken as day 0).

8.6.9 Quorum and Composition of Reviewers: The quorum for a Phase 1 Panel review meeting is five (5) and the composition of the reviewers participating in a review meeting shall fulfill the minimum requirements as stipulated in Section 5.4.2. Each review meeting will be chaired by the Chairman or a Vice/Deputy Chairman (who is appointed as a member of the Phase 1 Panel). The Secretariat will be responsible for

inviting Phase 1 Panel members to participate as reviewers in each review meeting.

- 8.6.10 Expert Advisors: The Chairman or Vice/Deputy Chairman may, as he/she deems beneficial to the review of an application/submission, invite expert advisor(s) to participate in a review meeting or provide expert advice on an application/submission, provided that each expert advisor shall sign a statement of confidentiality. The expert advisor(s) shall not be eligible to vote for the application/submission.
- 8.6.11 Pre-meeting Review: For each application/submission assigned for full review by the Phase 1 Panel, the Secretariat will, prior to the review meeting, send the application/submission (together with all the relevant documents) to the reviewers at least five (5) working days before the review meeting (where the day of review meeting is taken as day 0) for performing pre-meeting review. The Secretariat may, at its discretion, forward the reviewers' preliminary opinions, if any, to the principal investigator for consideration before the review meeting.
- 8.6.12 Investigator's Participation in a Meeting: The Chairman or Vice/Deputy Chairman may, as he/she deems beneficial to the review of an application/submission, request a principal investigator (or his/her designee) to participate and/or present the application/submission in a review meeting.
- 8.6.13 Conduct of Meeting: The Chairman or Vice/Deputy Chairman will use his/her endeavors to facilitate a balanced discussion among the participating reviewers in order to reach an ethically and scientifically satisfactory decision on each application/submission.
- 8.6.14 Scope of Considerations: In performing a review, the reviewers will:
- (a) evaluate and discuss the study's ethical aspects in accordance with the relevant parts of the CHAIR Phase 1 Guideline and the common ethical considerations set out in Appendix 7; and
 - (b) consider the SRP's recommendations with respect to the study's scientific aspects.
- 8.6.15 Decision by Consensus: The Chairman or Vice/Deputy Chairman will use his/her endeavors to facilitate the panel's decision on each application/submission by thorough discussion and unanimous consensus.
- 8.6.16 Decision by Voting: In the event that a unanimous consensus on an application/submission cannot be reached within a reasonable period of discussion, the Chairman or Vice/Deputy Chairman may at his/her discretion call for resolution by voting. A reviewer may vote for or against an application/submission, or otherwise

abstain from voting. A resolution shall be approved by majority vote of at least 75% of the reviewers who are eligible to vote for the application/submission. Any reviewer who has a conflict of interest or potential conflict of interest in an application/submission shall make a declaration and is not eligible to vote. The reviewer(s) dissenting and/or abstaining (together with the reason(s) for dissenting/abstaining) should be recorded in the minutes.

8.6.17 Types of Decisions: After reviewing an application/submission, the review panel will:

- (a) approve the application/submission, if it is deemed fulfilling all the relevant requirements of the IRB/REC;
- (b) disapprove the application/submission, if any fundamental inconsistency exists between the application/submission and the IRB/REC's requirements, and such inconsistency is deemed non-rectifiable;
- (c) request the principal investigator to modify the application/submission or to provide clarification or further information about the application/submission; or
- (d) give other opinion(s) or take other action(s) as it reasonably determines.

8.6.18 Resolution of Queries: In the event that a request for modification, clarification or further information is made by the review panel, the Secretariat will, as soon as possible and within ten (10) working days from the date of a review meeting (where the day of review meeting is taken as day 0), send the request to the principal investigator. The principal investigator is required to feedback on the request in writing as soon as possible. The request will be deemed satisfactorily addressed by the principal investigator if no further comment/query is made by the reviewers within a reasonable period as determined by the Secretariat. In the event that the principal investigator does not feedback on the request within ninety (90) calendar days from the date of the request, the review may be terminated by the IRB/REC. In the event that the request is not deemed by all the reviewers satisfactorily addressed by the principal investigator, further queries may be made to the principal investigator, or the application/submission may be brought up for discussion in another review meeting.

8.6.19 Notification of Decisions: The decision on an application/submission will be notified to the principal investigator by the Chairman or Vice/Deputy Chairman (or designee) in writing as soon as possible and within ten (10) working days after the decision is made (where the day of decision is taken as day 0). A sample notice for communicating decisions to principal investigators is set out in Appendix 8 for reference.

8.6.20 Documentation of Review: The Secretariat will be responsible for documenting and maintaining records for review of each application/submission, such as:

- (a) review meeting agenda;
- (b) review meeting minutes;
- (c) list of reviewers (including the reviewers in the Phase 1 Panel and scientific reviewers in the SRP, if applicable);
- (d) each reviewer's conflicts of interest declaration;
- (e) the SRP's recommendations (if applicable); and
- (f) the decision in writing (e.g. letter of approval).

8.7 Initial Review of Multicentre Studies under Harmonized Review Mechanism

8.7.1 Application under the Harmonized Review Mechanism: For a clinical study involving multiple study sites (i.e. multicentre study with 2 or more study sites), the principal investigators of the study sites may opt to make a joint single application for initial review of the study through the harmonized review mechanism for multicentre studies as set out below in this Section 8.7 by unanimously assigning one of the principal investigators as the coordinating investigator and applicant who is responsible for coordinating with all the principal investigators to submit the initial application. For the avoidance of doubt, individual principal investigators have the right to make separate applications for their own study sites at their discretion for whatever reasons.

8.7.2 Application for Multicentre Study within the Territory under the Jurisdiction of the IRB/REC: For a multicentre study with all study sites within the territory under the jurisdiction of the IRB/REC, the coordinating investigator should coordinate with the other principal investigator(s) to submit one application through the Secretariat as stipulated in Section 8.2. The IRB/REC will categorize and review the application as stipulated in Sections 8.3 to 8.6 by considering the all the information related to the study and each study site. The decision on the application shall be addressed to each principal investigator in writing and also notified to the coordinating investigator.

8.7.3 Application for Multicentre Study Across Territories under the Jurisdiction of Different Research Ethics Committees: For a multicentre study with study sites in multiple territories under the jurisdiction of different research ethics committees, the coordinating investigator should coordinate with the other principal investigator(s) to submit one application under the harmonized 2-level review mechanism which consists of:

- (a) Primary Review: A complete initial review performed by the research ethics committee with which the coordinating investigator has primary affiliation (“**Primary-review Committee**”); and
- (b) Secondary Review: An expedited review performed by the research ethics

committee with which each other principal investigator has primary affiliation (“**Secondary-review Committee**”).

The application should be submitted, through the secretariat, to the Primary-review Committee which will communicate with the relevant Secondary-review Committee(s) during the review process.

- 8.7.4 Primary Review under the Harmonized Review Mechanism: The IRB/REC shall undertake the responsibility of performing a primary review of the study by considering all the information related to the study and all the study sites in the event that it serves as the Primary-review Committee. The IRB/REC should categorize an application for full review (in accordance with Section 8.4 or 8.6) or expedited review (in accordance with Section 8.5) based on the risk categorization mechanism stipulated in Section 8.3, and inform the relevant Secondary-review Committee(s) of the categorization. In the event that any Secondary-review Committee has a different view on the categorization, the IRB/REC should discuss and come to a consensus as soon as practicable.
- 8.7.5 Full Primary Review: In the event of a full primary review, the IRB/REC should, at least ten (10) working days before a scheduled full review meeting, send the relevant application documents to each relevant Secondary-review Committee for review. Each relevant Secondary-review Committee is expected to return its comments (if any) at least one (1) working day before the scheduled full review meeting, and has the right to delegate a representative to attend the review meeting as a non-voting attendee. The IRB/REC shall, by taking into reference the opinions (if any) of the relevant Secondary-review Committee(s), review the application and make its decision in accordance with Section 8.4 or 8.6 (as applicable). The decision on an application should be communicated in writing within ten (10) working days (where the day of decision is taken as day 0) to:
- (a) the relevant Secondary-review Committee(s); and
 - (b) the coordinating investigator and each principal investigator for each study site under its jurisdiction.
- 8.7.6 Expedited Primary Review: In the event of an expedited primary review, the IRB/REC should, in parallel of its review, send the relevant application documents to each relevant Secondary-review Committee for review. Each relevant Secondary-review Committee is expected to return its comments (if any) within ten (10) working days. The IRB/REC shall, by taking into reference the opinions (if any) of the relevant Secondary-review Committee(s), review the application and make its decision in

accordance with Section 8.5. The decision on an application should be communicated in writing within ten (10) working days (where the day of decision is taken as day 0) to:

- (a) the relevant Secondary-review Committee(s); and
- (b) the coordinating investigator and each principal investigator for each study site under its jurisdiction.

8.7.7 No Ethics Committee Shopping: In case an application for a study is disapproved by the IRB/REC, the study shall not be submitted to another research ethics committee for review to avoid “ethics committee shopping”. Any request for reevaluation shall be made to the IRB/REC in accordance with Section 11.

8.7.8 Secondary Review: The IRB/REC shall undertake the responsibility of performing an expedited secondary review of the study by considering all the information related to the study and the study site(s) under its jurisdiction in the event that it serves as a Secondary-review Committee. The IRB/REC may,

- (a) give its approval or disapproval in case of an approval/positive opinion by the Primary-review Committee; or
- (b) give its disapproval in case of a disapproval/negative opinion by the Primary-review Committee.

The decision on an application should be communicated in writing within ten (10) working days (where the day of decision is taken as day 0) to:

- (a) the Primary-review Committee; and
- (b) each principal investigator for each study site under its jurisdiction.

8.7.9 Additional Study Site to a Multicentre Study: To include an additional study site under the jurisdiction of the IRB/REC to a multicentre study of which the application for initial review has already been approved or is under processing, the principal investigator of the additional study site shall submit a separate application to the IRB/REC in accordance with Sections 8.2 to 8.6. The harmonized review mechanism set out in this Section 8.7 will not be applicable.

9. Continuous Oversight

9.1 Importance of Continuous Oversight

9.1.1 Objective of Continuous Oversight: In addition to an initial review, the IRB/REC has

the responsibility to continuously oversee the status of each approved and ongoing clinical study for the purpose of continuously protecting the rights, safety and well-being of human participants in the study. This applies to all clinical studies approved by the IRB/REC, irrespective of the ways of initial review and approval (i.e. whether approved by the IRB/REC as standalone applications or in collaboration with other research ethics committees via the harmonized review mechanism).

9.1.2 Modes of Continuous Oversight: The IRB/REC will perform continuous oversight of each approved clinical study, until its completion or early termination, by:

- (a) regular continuing review;
- (b) review of amendments and changes;
- (c) review of new information;
- (d) review of deviations and compliance incidents;
- (e) review of safety reports; and
- (f) final review.

9.2 Regular Continuing Review

9.2.1 Frequency of Regular Continuing Review: The IRB/REC shall keep track of the updated status of each approved clinical study through regular continuing review once a year from the date of the initial approval and during the period of the study, or more frequently if deemed required by the IRB/REC considering the degree of risk of a study.

9.2.2 Progress Report: To facilitate the IRB/REC's continuing review, a principal investigator shall have the responsibility to submit a progress report on his/her study to the IRB/REC within one (1) month prior to each deadline for regular continuing review by using the IRB/REC's specified form. The progress report shall include updated study information with respect to the period of review, such as:

- (a) the status of the study (e.g. ongoing);
- (b) the numbers of participants recruited in, withdrew from and completed the study;
- (c) summary of major changes to the study or study personnel;
- (d) summary of serious adverse events;
- (e) summary of complaints by participants; and
- (f) summary of significant updated information that may affect the safety of participants or participants' willingness to continue participating in the study.

9.2.3 Review of Progress Reports: Each progress report will be reviewed by reviewer(s) in the Expedited Panel through an expedited review process as stipulated in Section 8.5.

In the event that the reviewer(s) deem(s) any information in a progress report may be linked with a substantially higher degree of risk and a full review is required, the submission will be channeled for full review. In no circumstance a study can be terminated only by expedited review.

- 9.2.4 Notification of Decisions: The decision on a submission will be notified to the principal investigator by the Chairman or a Vice/Deputy Chairman (or designee) in writing as soon as possible and within ten (10) working days after the decision is made. In case there is not any concern or comment on a progress report, an acknowledgement of receipt of the submission will be issued to the principal investigator.
- 9.2.5 Reminder by Secretariat: The Secretariat will send a reminder to the principal investigator prior to each deadline for regular continuing review. Notwithstanding the above, principal investigators shall anyhow have the responsibility to submit progress reports to the IRB/REC whether or not reminders are received from the Secretariat.
- 9.2.6 Failure to Submit Progress Report: In the event that a principal investigator fails to submit a progress report to the IRB/REC by the deadline for regular continuing review, the IRB/REC may:
- (a) request for suspension of all participant recruitment activities and recruitment of additional participants into the study;
 - (b) refuse accepting any new application for initial review of clinical study submitted by the principal investigator and his/her participation in any new clinical study (whether as principal investigator, co-investigator/sub-investigator or otherwise); and/or
 - (c) notify the issue to the other research ethics committees under the HA, which may refuse his/her participation in any new clinical study (whether as principal investigator, co-investigator/sub-investigator or otherwise);

until the progress report is properly submitted and an acknowledgement is received from the IRB/REC.

9.3 Review of Amendments and Changes

- 9.3.1 Implementation of Amendments/Changes: Investigators and study personnel have the responsibility to adhere to the study protocol and other study documents/materials approved by the IRB/REC. No amendment or change to any approved study document/material shall be implemented without the IRB/REC's approval, except:
- (a) where necessary to eliminate any immediate hazard to the participants; or

(b) if an amendment/change is only of an administrative or logistical nature (e.g. correction of typo errors).

9.3.2 Application for Amendments/Changes: In the event that any amendment or change needs to be made to any study document/material, the principal investigator shall submit an application for study amendment(s)/change(s) to the IRB/REC by using the IRB/REC's specified form.

9.3.3 Review of Amendments/Changes: The Chairman or a Vice/Deputy Chairman (or designee) will perform a preliminary review of an application for study amendment(s)/change(s) and assess the possible change in the degree of risk arising from the proposed amendment(s)/change(s). An application for amendment(s)/change(s) that is/are deemed adding no more than minimal additional risk to the participants will be reviewed by reviewer(s) in the Expedited Panel through an expedited review process as stipulated in Section 8.5. In the event that the Chairman or Vice/Deputy Chairman (or designee) deems the proposed amendment(s)/change(s) may incur more than minimal additional risk and a full review is required, the application will be channeled for full review. In no circumstance a study can be terminated only by expedited review.

9.3.4 Notification of Decisions: The decision on an application will be notified to the principal investigator by the Chairman or Vice/Deputy Chairman (or designee) in writing as soon as possible and within ten (10) working days after the decision is made. A sample notice for communicating decisions to principal investigators is set out in Appendix 8 for reference.

9.4 Review of New Information

9.4.1 Reporting of New Information: A principal investigator has the responsibility to report to the IRB/REC, by using the IRB/REC's specified form, any new information that may adversely affect the rights, safety or well-being of the participants or the proper conduct of his/her clinical study.

9.4.2 Review of New Information: The Chairman or a Vice/Deputy Chairman (or designee) will perform a preliminary review of the new information received and assess if such information may change the risk assessment for the study. If the new information is not deemed to substantially and adversely affect the participants' rights, safety or well-being, the submission will be reviewed by reviewer(s) in the Expedited Panel through an expedited review process as stipulated in Section 8.5. In the event that the Chairman or Vice/Deputy Chairman deems the new information may be linked with a

substantially higher degree of risk and a full review is required, the submission will be channeled for full review. In no circumstance a study can be terminated only by expedited review.

- 9.4.3 Notification of Decisions: The decision on a submission will be notified to the principal investigator by the Chairman or Vice/Deputy Chairman (or designee) in writing as soon as possible and within ten (10) working days after the decision is made. In case there is not any concern or comment on the new information, an acknowledgement of receipt of the submission will be issued to the principal investigator.

9.5 Review of Deviations and Compliance Incidents

- 9.5.1 Reporting of Deviations/Incidents: A principal investigator has the responsibility to report to the IRB/REC, by using the IRB/REC's specified form, any deviation from the study protocol or compliance incident that has occurred during a study and may adversely affect the rights, safety or well-being of any participant, within thirty (30) calendar days from the first awareness of the deviation/incident by the principal investigator.
- 9.5.2 Review of Reports on Deviations/Incidents: The Chairman or a Vice/Deputy Chairman (or designee) will perform a preliminary review of a report on a deviation/incident and assess if a full review or expedited review is required. If a reported deviation/incident is not deemed to have a substantial adverse effect to the rights, safety or well-being of any participant and no special action will need to be taken by the IRB/REC, the submission will be reviewed by reviewer(s) in the Expedited Panel through an expedited review process as stipulated in Section 8.5. In the event that the Chairman or Vice/Deputy Chairman deems the deviation/incident may result in any substantial adverse effect to the rights, safety or well-being of any participant and special action(s) may need to be taken by the IRB/REC, the submission will be channeled for full review. In no circumstance a study can be terminated only by expedited review.
- 9.5.3 Notification of Decisions: The decision on a submission will be notified to the principal investigator by the Chairman or Vice/Deputy Chairman (or designee) in writing as soon as possible and within ten (10) working days after the decision is made. In case there is not any concern or comment on the deviation/incident, an acknowledgement of receipt of the submission will be issued to the principal investigator.
- 9.5.4 Rectification/Remedial/Modification Actions: The IRB/REC will have the right to:
- (a) request the principal investigator to take appropriate rectification, remedial and/or modification action(s) with respect to the deviation/incident;

- (b) request for suspension of further recruitment of participants into the study until the required rectification/remedial/modification action(s) has/have been completed; and/or
- (c) request for suspension or termination of the study if the required rectification/remedial/modification action(s) is/are not completed within a reasonable period of time, or if the deviation/incident is deemed by the IRB/REC seriously affecting the rights, safety or well-being of the participants and the deviation/incident is not rectifiable/remediable/modifiable.

9.6 Review of Safety Reports

9.6.1 Safety Monitoring: Continuous safety monitoring is an important part in participant protection in clinical studies. An investigator has the responsibility to:

- (a) monitor his/her participants' safety by observing any safety event occurred in any of the participants; and
- (b) in the event of a multicentre clinical study, observe any significant safety event reported from any other study site.

9.6.2 Types of Safety Events: Considering the seriousness, expectedness and causality with an investigational product/procedure, a safety event can be classified as:

- (a) an adverse event ("AE"), which is an unfavorable or unintended sign, symptom, reaction or disease that is associated in time with participation in a clinical study or the use of an investigational product/procedure, whether or not the event is related to the study or the investigational product/procedure, or is expected;
- (b) a serious adverse event ("SAE"), which is an AE that: (i) results in death; (ii) is life-threatening; (iii) requires inpatient hospitalization or prolongation of existing hospitalization; (iv) results in persistent or significant disability or incapacity; (v) results in a congenital anomaly or birth defect; or (vi) in the professional medical judgment of an investigator, may seriously jeopardize a participant's health or may require medical intervention to prevent any of the events listed in (i) to (v) above; or
- (c) a suspected unexpected serious adverse reaction ("SUSAR"), which is a SAE that is unexpected according to the available information and is suspected to be causally related to an investigational product/procedure.

9.6.3 Reporting of SAEs at Investigator's Study Site: The IRB/REC has the responsibility to protect participants' safety through review of SAEs occurred on participants recruited

at the study sites under its jurisdiction. A principal investigator shall, during the period of a study, have the responsibility to report to the IRB/REC all SAEs observed from any participant recruited from his/her study site in accordance with the requirements set out in Appendix 9 by using the IRB/REC's specified form.

- 9.6.4 Reporting of SUSARs outside Investigator's Study Sites: The IRB/REC also has the responsibility to protect participants' safety through review of SUSARs occurred outside study sites under its jurisdiction. A principal investigator shall, during the period of a study, have the responsibility to report to the IRB/REC all SUSARs reported from outside the principal investigator's study site in accordance with the requirements set out in Appendix 9 by using the IRB/REC's specified form.
- 9.6.5 Review of Safety Reports: A safety report will be reviewed by reviewer(s) in the Expedited Panel through an expedited review process as stipulated in Section 8.5. In the event that the reviewer(s) deem(s) a safety report has any significant implication on protection of participants' safety, the report will be channeled for full review. In no circumstance a study can be terminated only by expedited review.
- 9.6.6 Notification of Decisions: The decision on a submission will be notified to the principal investigator by the Chairman or a Vice/Deputy Chairman (or designee) in writing as soon as possible and within ten (10) working days after the decision is made. In case there is not any concern or comment on a safety report, an acknowledgement of receipt of the submission will be issued to the principal investigator.
- 9.6.7 Follow-up of SAEs: The principal investigator shall, with respect to each SAE occurred at his/her study site and reported to the IRB/REC, have the responsibility to:
- (a) provide further information about the SAE on the IRB/REC's request; and
 - (b) follow the SAE until resolution or conclusion of the event, and provide follow-up report(s) to the IRB/REC in due course.

9.7 Final Review

- 9.7.1 Final Report: The IRB/REC shall have the responsibility to follow each approved clinical study until its completion or early termination. A principal investigator shall have the responsibility to submit a final report on his/her study to the IRB/REC within two (2) months from the date of formal closure of the study by using the IRB/REC's specified form. The final report shall include a summary of study information, such as:
- (a) the status of the study (e.g. completed or prematurely terminated);
 - (b) the numbers of participants recruited in, withdrew from and completed the study;

- (c) summary of serious adverse events;
- (d) summary of complaints by participants; and
- (e) summary of significant updated information that may affect the safety of participants.

9.7.2 Review of Final Report: Each final report will be reviewed by reviewer(s) in the Expedited Panel through an expedited review process as stipulated in Section 8.5. In the event that the reviewer(s) deem(s) any information in a final report may be linked with a substantially higher degree of risk and a full review is required, the submission will be channeled for full review.

9.7.3 Notification of Decisions: The decision on a submission will be notified to the principal investigator by the Chairman or a Vice/Deputy Chairman (or designee) in writing as soon as possible and within ten (10) working days after the decision is made. In case there is not any concern or comment on a final report, an acknowledgement of receipt of the submission will be issued to the principal investigator.

9.7.4 Failure to Submit Final Report: In the event that a principal investigator fails to submit a final report to the IRB/REC by the deadline, the IRB/REC may:

- (a) refuse accepting any new application for initial review of clinical study submitted by the principal investigator and his/her participation in any new clinical study (whether as principal investigator, co-investigator/sub-investigator or otherwise); and/or
- (b) notify the issue to the other research ethics committees under the HA, which may refuse his/her participation in any new clinical study (whether as principal investigator, co-investigator/sub-investigator or otherwise);

until the final report is properly submitted and an acknowledgement is received from the IRB/REC.

10. Study Site Auditing

10.1 Purpose and Types of Audits by IRB/REC

10.1.1 Purpose of Audits by IRB: An audit by the IRB/REC is a systematic and independent examination of clinical study activities, documents and facilities to determine whether the study concerned was conducted according to its study protocol, the Declaration of Helsinki, the ICH GCP (if applicable) and the IRB/REC's requirements, for the ultimate purpose of protecting the rights, safety and well-being of the participants participated

or participating in the study.

10.1.2 Types of Audits: The IRB/REC may perform two types of audits, including:

- (a) routine audits; and
- (b) for-cause audits.

10.1.3 Routine Audits: Routine audits may be performed as a general quality control measure for ensuring compliance in the conduct of a clinical study at a study site. The IRB/REC will select studies for routine audits by a risk-based approach by considering various risk factors. Examples include:

- (a) studies involving special ethical concerns;
- (b) studies involving special clinical risk; and
- (c) studies involving a large number of participants.

10.1.4 For-cause Audits: The IRB/REC may perform a for-cause audit in response to a particular compliance concern that may be triggered by:

- (a) a complaint by a participant (or his/her family member or legally acceptable representative); or
- (b) a report from the study's sponsor or a competent regulatory authority in respect of any compliance concern.

10.2 Conduct and Follow-up of Audits

10.2.1 Responsibility to Facilitate Audits: Principal investigators shall allow and facilitate audits by the IRB/REC on reasonable request. An audit will be performed by auditor(s) delegated by the IRB/REC.

10.2.2 Preparation for Audits: To prepare for an audit, the IRB/REC will:

- (a) liaise with the principal investigator on the scope, schedule and arrangements for the audit; and
- (b) inform the principal investigator of the documents, records, materials and facilities that need to be made available to the auditor(s) during the audit.

10.2.3 Facilitation of Audits: During an audit, the principal investigator will be required to:

- (a) participate in (or authorize a designee to participate in) the audit; and
- (b) cooperate with the auditor(s) to facilitate a smooth audit.

- 10.2.4 Follow-up on Audits: After completion of an audit, the IRB/REC will issue a written audit report to the principal investigator. The principal investigator will be required to:
- (a) respond on any issue or finding highlighted in the audit report;
 - (b) take proper follow-up action(s) with respect to each issue or finding; and
 - (c) issue a follow-up report to the IRB/REC upon completion of all follow-up action(s).

11. Reevaluation Mechanism

11.1 Right to Request for Reevaluation

- 11.1.1 Fair and Independent Review and Oversight: The IRB/REC is authorized by the Governing Body(ies) to perform ethics and scientific review and oversight of clinical studies, and will use its best endeavors to perform review and oversight in a fair and independent manner in accordance with the standards and requirements set out in this SOP.
- 11.1.2 Investigators' Right to Request for Reevaluation: In the event that a principal investigator does not agree with the IRB/REC's decision(s)/opinion(s) with respect to his/her clinical study (e.g. disapproval of an initial application for a study), the principal investigator will have the right to make a written request for reevaluation within thirty (30) calendar days from the date of the IRB/REC's written notification of its decision(s)/opinion(s), provided that sufficient justification(s) for the request can be made available to the IRB/REC for reevaluation.

11.2 Reevaluation Process

- 11.2.1 Initiation of Reevaluation: Any request for reevaluation shall be made in writing to the Chairman through the Secretariat. The principal investigator shall provide sufficient justification(s) for the request, with supporting documents or information as appropriate.
- 11.2.2 Reevaluation and Decisions: The IRB/REC will perform an independent review of the case by full review in accordance with the standards and requirements set out in this SOP, and will duly consider the rationale of the decision(s)/opinion(s) in the initial review and the justification for reevaluation by the principal investigator. The IRB/REC's decision after the reevaluation shall be final.

12. Review Fees

12.1 Determination of Review Fees

12.1.1 Determination of Review Fees: The fees for receipt of applications/submissions and performance of ethics and scientific review and oversight shall be determined and may be adjusted from time to time by the GC.

12.1.2 Notification of Review Fees: The Secretariat will have the responsibility to maintain an updated fees schedule and provide the updated information to investigators on their request.

12.2 Payment of Review Fees

12.2.1 Payment Methods: All review fees shall be paid according to the instructions of the Secretariat.

12.2.2 No Refund: No refund of any fee paid to the IRB/REC will be given in any circumstances, irrespective of the decisions/opinions of the IRB/REC, withdrawal of applications/submissions by principal investigators, refusal of applications/submissions by the IRB/REC or otherwise.

13. Records Management

13.1 Electronic Clinical Research Ethics Review Portal

13.1.1 Clinical Research Ethics Review Portal: The HA is maintaining an electronic “Clinical Research Ethics Review Portal” and has provided an authorization to the IRB/REC to utilize the portal for management of applications/submissions and the related information and documents.

13.1.2 Handling of Study Information and Documents under the Portal: The Secretariat is responsible for handling the information and documents of the clinical studies under the IRB/REC’s jurisdiction and making the information and documents available to the GC and the Governing Body(ies) as required.

13.2 Records Retention

13.2.1 Retention of Essential Records: The IRB/REC shall retain all essential documents and records relating to ethics and scientific review and oversight of each clinical study, including:

- (a) documents and records relating to initial review of the study (e.g. initial application, study documents submitted by the principal investigators, review meeting minutes, list of reviewers and their conflicts of interest declaration, relevant correspondences between the IRB/REC and principal investigator, and the

- IRB/REC's written decision(s)/opinion(s));
- (b) documents and records relating to continuous oversight of the study (e.g. records for review of amendments/changes, new information or deviations/compliance incidents, SUSAR reports, progress reports and final report); and
- (c) documents and records of study audits by the IRB/REC (e.g. audit reports and records of follow-up actions), if applicable.

13.2.2 Records Retention Period for Approved Studies: All essential IRB/REC records with respect to each approved clinical study shall be retained for a minimum period of five (5) years from the earlier of:

- (a) the date of the final report to the IRB/REC; or
- (b) the date of termination of the study by the IRB/REC.

13.2.3 Records Retention Period for Disapproved Studies: All essential IRB/REC records with respect to each disapproved clinical study shall be retained until the earlier of:

- (a) the expiry of the 30-day period after the written notification of the IRB/REC's decision(s)/opinion(s) (to allow the principal investigator to make a request for reevaluation as per Section 11.1); and
- (b) the conclusion of a reevaluation as per Section 11.2.

Appendices

Appendix 1:

List of Defined Terms

21 CFR 56	Code of Federal Regulations Title 21 Part 56, U.S.
45 CFR 46	Code of Federal Regulations Title 45 Part 46, U.S.
AE	Adverse event
Belmont Report	Ethical Principles and Guidelines for the Protection of Human Subjects of Research officially created by the former U.S. Department of Health, Education, and Welfare
CHAIR	Consortium on Harmonization of Institutional Requirements for Clinical Research
CHAIR Phase I Guideline	Guideline on Ethics Oversight and Scientific Evaluation of Phase I Clinical Trials issued by CHAIR
Chairman	Chairman of the IRB/REC
China GCP	China Good Clinical Practice Guideline for Drug Clinical Trials
CUHK	The Chinese University of Hong Kong
Declaration of Helsinki	Declaration of Helsinki of the World Medical Association
DSMC	Data and safety monitoring committee of a clinical study
Expedited Panel	Expedited Review Panel of the IRB/REC
GC	Governance Committee overseeing the IRB/REC
Governing Body(ies)	The governing body(ies) of the IRB/REC, which refers to HKU and HA HKW in this SOP
HA	Hospital Authority
HA Central IRB	Hospital Authority Central Institutional Review Board
HA Guide	Hospital Authority Guide on Research Ethics for Study Site & Research Ethics Committee
HA HKW	Hospital Authority Hong Kong West Cluster
HAHO	Hospital Authority Head Office
HAREC	Hospital Authority Head Office Steering Committee on Research Ethics
HKU	The University of Hong Kong
HKU/HA HKW IRB	Institutional Review Board of The University of Hong Kong/Hospital Authority Hong Kong West Cluster
ICH GCP	International Council for Harmonization of Technical Requirements for Pharmaceuticals for Human Use Guideline for Good Clinical Practice
IMP	Investigational medicinal product
Independent Member	Independent member of the IRB/REC
IRB/REC	Institutional Review Board or Research Ethics Committee established by the Governing Body(ies), which refers to HKU/HA HKW IRB in this SOP
Joint CUHK-NTEC CREC	Joint Chinese University of Hong Kong – New Territories East Cluster Clinical Research Ethics Committee
JSC	Joint Scientific Committee for Phase I Clinical Trials
NIH	National Institutes of Health, U.S.
NMPA	National Medical Products Administration, China
Non-Scientific Member	Non-scientific member of the IRB/REC
OHRP	Office for Human Research Protections, U.S.
Phase I Panel	Phase I Clinical Trials Review Panel of the IRB/REC
SAE	Serious adverse event
Scientific Member	Scientific member of the IRB/REC

Secretariat	Secretariat of the IRB/REC
SOP	Standard operating procedure
SRP	Scientific Review Panel formed under the JSC
Standard Panel	Standard Review Panel of the IRB/REC
SUSAR	Suspected unexpected serious adverse reaction
Vice/Deputy Chairman	Vice or Deputy Chairman of the IRB/REC

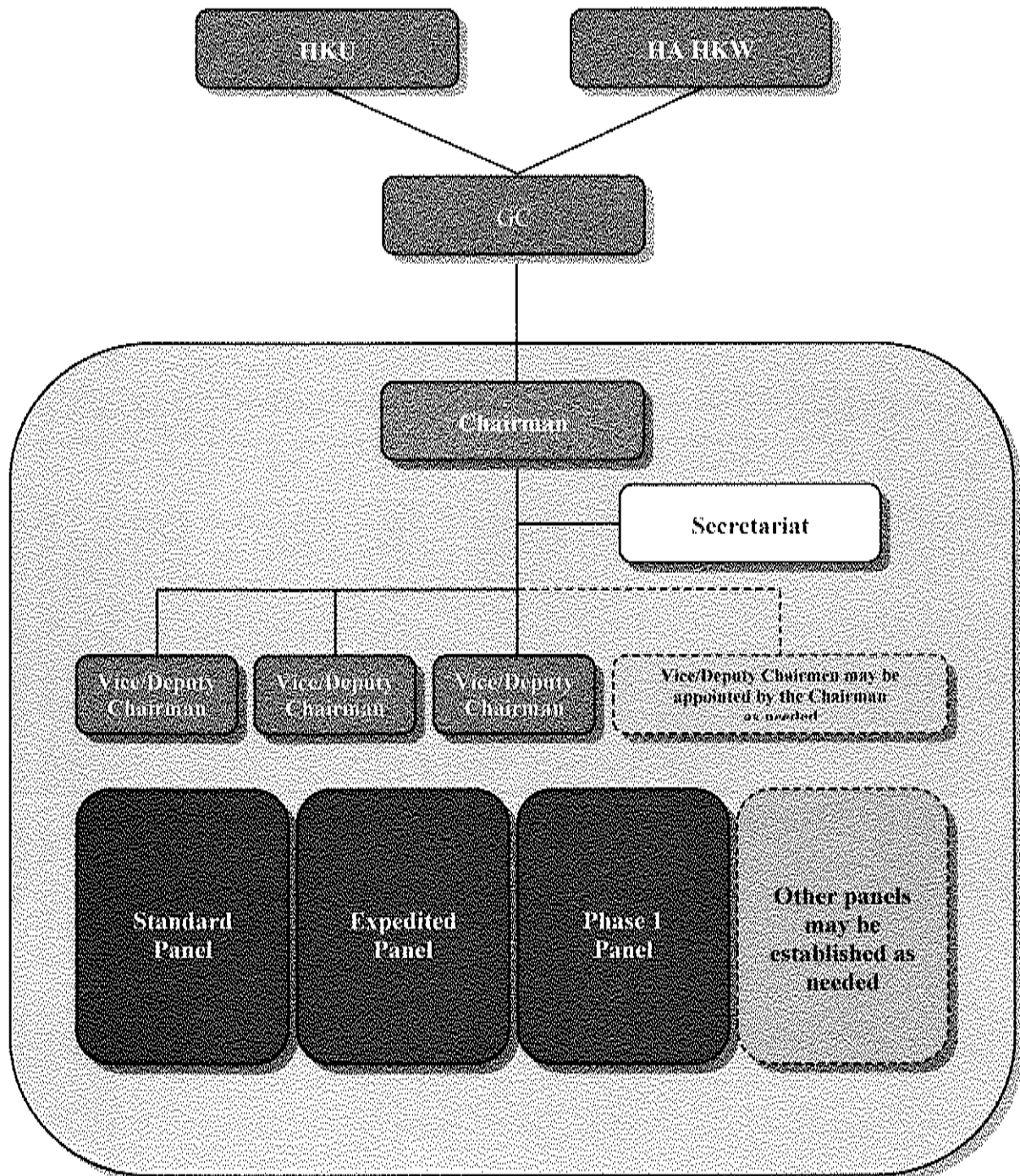
Appendix 2:

Major Premises Covered under this SOP

The premises covered under this SOP shall include (but not limited to):

Institution	Address
The University of Hong Kong	Pokfulam Road, Hong Kong
Hospitals	Address
Grantham Hospital	125 Wong Chuk Hang Road, Aberdeen, Hong Kong
MacLehose Medical Rehabilitation Centre	7 Sha Wan Drive, Pokfulam, Hong Kong
Queen Mary Hospital	102 Pokfulam, Hong Kong
The Duchess of Kent Children's Hospital at Sandy Bay	12 Sandy Bay Road, Pokfulam, Hong Kong
Tsan Yuk Hospital	30 Hospital Road, Sai Ying Pun, Hong Kong
Tung Wah Group of Hospitals -- Fung Yiu King Hospital	9 Sandy Bay Road, Pokfulam, Hong Kong
Tung Wah Hospital	12 Po Yan Street, Sheung Wan, Hong Kong
The Prince of Philip Dental Hospital	34 Hospital Road, Sai Ying Pun, Hong Kong
Clinics	Address
Aberdeen Jockey Club General Outpatient Clinic	10 Aberdeen Reservoir Road, Aberdeen, Hong Kong
Ap Lei Chau General Outpatient Clinic	161 Ap Lei Chau Main Street, Ap Lei Chau, Hong Kong
Central District Health Centre General Outpatient Clinic	1 Kau U Fong, Central, Hong Kong
David Trench Rehabilitation Centre	No. 1F, High Street, Hong Kong
Kennedy Town Jockey Club General Outpatient Clinic	45 Victoria Road, Kennedy Town, Hong Kong
Sai Ying Pun Jockey Club General Outpatient Clinic	134 Queen's Road, Sai Ying Pun, Hong Kong
HKU Eye Centre	Level 7, Marina 8, No.8 Heung Yip Road, Wong Chuk Hang, Hong Kong

Appendix 3: Organization Chart of the IRB/REC



GC	Governance Committee
HA HKW	Hospital Authority Hong Kong West Cluster
HKU	The University of Hong Kong
HKU/HA HKW IRB	Institutional Review Board of The University of Hong Kong/Hospital Authority Hong Kong West Cluster

Appendix 4:

Persons Eligible to Nominate IRB/REC Members

The Chairman shall, on consultation with the GC, nominate a suitable number of candidates with a suitable mix of backgrounds and expertise as IRB/REC members for supporting the IRB/REC's responsibilities.

All nominations shall be submitted to the GC for consideration and recommendation to HKU and HA HKW for appointment.

Appendix 5:

Documents Required for an Application for Initial Review

Documents (See notes overleaf)		Languages		Submission	
		English	Chinese [#]	Online Portal	Hard Copy
1.	Completed clinical research ethics review application form over the Hospital Authority Clinical Research Ethics Review Portal at https://hacreportal.ha.org.hk/	✓	---	✓	✓
2.	Wet-ink signed page of the application form	✓	---	✓	✓
3.	Submission letter for initial review	✓	---	✓	✓
4.	Crossed cheque/bank draft for payment of initial review application fee	*	*	---	*
5.	Wet-ink signed investigator's conflicts of interest declaration form	✓	---	✓	✓
6.	Investigators' curricula vitae (principal investigator and all co-investigators/sub-investigators)	✓	---	✓	✓
7.	Clinical study protocol	✓	---	✓	✓
8.	Investigator's brochure	*	---	*	*
9.	Informed consent form and/or participant information sheet	*	*	*	*
10.	Participant recruitment materials (e.g. participant recruitment advertisement or poster)	*	*	*	*
11.	Documents/materials for use by participants in the study (e.g. participant-administered questionnaire)	*	*	*	*
12.	Certificate of insurance for clinical study	*	---	*	*
13.	Supporting letter for student project	*	---	*	*
Key: ✓ Mandatory * Required if applicable # If an original Chinese document is issued in simplified Chinese, a traditional Chinese version should also be submitted.					

Remarks on the Documents Required for an Application for Initial Review

Documents	Remarks
1	Any application should be submitted via the Hospital Authority Clinical Research Ethics Review Portal at https://hacerportal.ha.org.hk/ . The application procedures is downloadable from HKU Li Ka Shing Faculty of Medicine's website (human ethics section) or the intranet of HA HKW.
2	A wet-ink signed page of the application form should be submitted in original hardcopy to the Secretariat and also uploaded to the online portal.
3	A sample is downloadable from HKU Li Ka Shing Faculty of Medicine's website (human ethics section) or the intranet of HA HKW.
4	Application fee is only applicable to industry-sponsored clinical studies. Any crossed cheque or bank draft issued shall be denominated in Hong Kong dollars or U.S. dollars.
5	All investigators participating in a clinical study shall provide their signed conflicts of interest declaration forms (downloadable from HKU Li Ka Shing Faculty of Medicine's website (human ethics section) or the intranet of HA HKW). An investigator's potential conflicts of interest in a clinical study may include (i) any proprietary interest in the study and/or the investigational product(s)/procedure(s) (e.g. patent); (ii) any equity interest in an organization owning the rights to the study and/or the investigational product(s)/procedure(s) (e.g. stocks and options), except for indirect ownership through collective investment schemes (e.g. mutual funds and mandatory provident funds) in which the investigator has no control over the investment strategy; (iii) any financial payment or valuable provided by an organization owning the rights to the study and/or the investigational product(s)/procedure(s) other than the costs for running a clinical study (e.g. donation); (iv) any financial arrangement linking to the outcomes of a clinical study (e.g. royalty fee); and (v) any decision-making or influential position in an organization owning the rights to the study and/or the investigational product(s)/procedure(s); and (vi) a direct family relationship with a person having any of the above interests (e.g. spouse).
6	The updated curriculum vitae of each investigator (i.e. principal investigator or co-investigator/sub-investigator) must be submitted.
7, 8	Incorporation of an investigator brochure with a clinical study protocol is acceptable.
9	Informed consent form and participant information sheet may be combined into one document.
10, 11	The language(s) used in any participant recruitment material and/or other document/material for use by participants will depend on the language(s) of the target participant population.
12	Any clinical study with higher than nominal clinical risk as determined by the IRB/REC may be required to be covered by appropriate insurance policy(ies) (e.g. no-fault clinical trial insurance), evidenced by certificate(s) of insurance. A certificate of insurance may be submitted to the IRB/REC separately from the application subject to the IRB/REC's permission, but in any event shall be prior to initiation of the clinical study.
13	A supporting letter should be provided by the academic supervisor of the student responsible for the student project.

Appendix 6: Clinical Study Categorization Form

Risk Group	Risk Factors (See notes overleaf)		Yes	No
Human Participants	1	Recruitment of human participants [see notes of completion]	<input type="checkbox"/> → 2	<input type="checkbox"/> → B
Medical Products	2	Use of any medical product that is not needed or used for the participants' normal clinical care [see notes of completion]	<input type="checkbox"/> → 3	<input type="checkbox"/> → 8
	3	Each medical product used is registered or permitted to be marketed in Hong Kong	<input type="checkbox"/> → 4	<input type="checkbox"/> → 5
	4	Use of each medical product is within the labeled use in Hong Kong [see notes of completion]	<input type="checkbox"/> → 8	<input type="checkbox"/> → 5
	5	Any medical product used is a chemical or biological drug that is to be tested in humans for the first time	<input type="checkbox"/> → C	<input type="checkbox"/> → 6
Study Designs	6	The study is a phase I clinical trial on a chemical or biological drug as designated on its study protocol	<input type="checkbox"/> → C	<input type="checkbox"/> → 7
	7	The study only has human pharmacology, toxicity and/or safety (but not efficacy) of the chemical or biological drug as its primary objective(s) as specified on its study protocol	<input type="checkbox"/> → C	<input type="checkbox"/> → A
	8	Involvement of placebo, impeding access to available treatment, or withdrawal of ongoing treatment driven by the study protocol	<input type="checkbox"/> → A	<input type="checkbox"/> → 9
Clinical Procedures	9	Involvement of any clinical procedure that is not needed or applied for the participants' normal clinical care [see notes of completion]	<input type="checkbox"/> → 10	<input type="checkbox"/> → 11
	10	Each clinical procedure applied presents no more than minimal clinical risk to the participants [see notes of completion]	<input type="checkbox"/> → 11	<input type="checkbox"/> → A
Participant Assignment Methods	11	Participants are assigned to different clinical interventions by randomization or other research specific methods (other than by the professional judgment of qualified medical professionals)	<input type="checkbox"/> → A	<input type="checkbox"/> → 12
Participants Vulnerability	12	Involvement of vulnerable participants [see notes of completion]	<input type="checkbox"/> → A	<input type="checkbox"/> → B
Channel A	Full review by Standard Panel (unless otherwise determined by the IRB/REC according to the IRB/REC's SOP)			
Channel B	Expedited review by Expedited Panel (unless otherwise determined by the IRB/REC according to the IRB/REC's SOP or requested by the principal investigator for a full review)			
Channel C	Full review by Phase I Panel (unless otherwise determined by the IRB/REC according to the IRB/REC's SOP)			

Notes for Completion of the Clinical Study Categorization Form

Risk Factors	Remarks
1	Recruitment of human participants means prospective recruitment of participants into a clinical study, irrespective of the nature of the study. Retrospective research on human materials or human data that have already been collected may not require recruitment of human participant unless separate informed consent is required for some or all of the participants in the circumstances.
2	<p>Medical products may include (but not limited to):</p> <ul style="list-style-type: none"> (a) drugs (e.g. chemical drugs, biological drugs and vaccines); (b) medical devices (e.g. implants, diagnostic kits and imaging machines) (c) Chinese/herbal medicines (e.g. proprietary/traditional Chinese medicines); (d) health/nutritional supplements; (e) cell therapies (e.g. stem cells); and (f) gene therapies (e.g. viral vectors).
4	Labeled use refers to the use a medical product in accordance with the conditions of registration in Hong Kong (e.g. indications, patient groups, formulations and dosages).
9	<p>Clinical procedures include (but not limited to):</p> <ul style="list-style-type: none"> (a) clinical examination/assessments (e.g. venipuncture) (b) surgical procedures (e.g. tumor resection); (c) nursing procedures; (d) physiotherapies; (e) occupational therapies; (f) psychotherapies; (g) behavioral therapies; (h) alternative therapies (e.g. acupuncture); and (i) imaging methods (e.g. X-ray examination).
10	Minimal clinical risk means the probability and magnitude of harm or discomfort anticipated to be caused to the human participants are not greater than those ordinarily encountered in their daily life or normal clinical care (e.g. the clinical risk associated with a buccal swab, taking of a small quantity of blood by venipuncture, and a chest x-ray examination).
12	<p>Vulnerable participants are individuals whose willingness to participate in clinical studies may relatively easily be unduly influenced by biases or coercive factors, or who are incapable of giving free informed consent through a normal informed consent process, such as:</p> <ul style="list-style-type: none"> (a) children or adolescent (of less than 18-year-old); (b) illiterates; (c) mentally incapacitated persons; (d) impoverished persons; (e) ethnic minority groups; (f) patients in emergency conditions; (g) prisoners; and (h) subordinates or students of investigators.

Appendix 7:

Common Considerations in IRB/REC Review

Key Dimensions	Common Considerations
Research Products/Procedures	<ul style="list-style-type: none"> • Involvement of clinical interventions (e.g. medical products or clinical procedures) • Potential risks and related scientific rationale • Potential benefits and related scientific rationale
Study Design	<ul style="list-style-type: none"> • Significance of research questions • Correlation of study design and research questions • Use of randomization or other research specific participant assignment methods • Involvement of placebo, impeding access to available treatment, or withdrawal of ongoing treatment driven by study protocol • Statistical considerations
Study Execution	<ul style="list-style-type: none"> • Expertise and experience of investigators and study personnel • Training on the Declaration of Helsinki and ICH GCP • Study site facilities • Mechanism of ongoing safety monitoring and reporting • Medical emergency arrangements
Participants' Rights	<ul style="list-style-type: none"> • Participant type and vulnerability • Involvement of healthy volunteers or participants without the targeted diseases/conditions • Participant recruitment strategies • Informed consent documents and process • Protection of participants' personal data • Payments to participants
Potential Research Biases	<ul style="list-style-type: none"> • Conflicts of interest, potential conflicts of interest and declaration of interest • Public disclosure of study information (e.g. by registration with public clinical trial registries) • Publication plan
Potential Liability Management	<ul style="list-style-type: none"> • Insurance • Indemnity

Appendix 8:

Sample Notice for Communicating IRB/REC's Decisions



The University of Hong Kong



Hospital Authority Hong Kong West Cluster

**Institutional Review Board of The University of Hong Kong/Hospital
Authority Hong Kong West Cluster
(HKU/HA HKW IRB)**

Room 901, Administration Block, Queen Mary Hospital, 102 Pokfulam Road, Hong Kong
Tel: (852) 2255 4086 Fax: (852) 2255 4735

HKU/HA HKW IRB is an independent committee established by The University of Hong Kong and Hospital Authority Hong Kong West Cluster and authorized to perform ethics and scientific review and oversight of clinical studies in accordance with its standard operating procedure and the principles of the Declaration of Helsinki and ICH Good Clinical Practice.

Date: <Date of Notice> IRB/REC Ref. No.: <Ref. No.>

To: <PI Name>
<PI Title & Department>
<PI Affiliated Institution>

This notice is issued by HKU/HA HKW IRB with respect to the application/submission by you, being the principal investigator of the following study at your study site:

- Study Protocol Title: <Title>
- Study Protocol No.: <No.>
- Coordinating Investigator (if applicable): <CI Name, or put "N/A"> *(for multicentre study and if different from the principal investigator of the following study site)*
- Study Site: <Study Site>

In accordance with our standard operating procedure, we have duly performed ethics and scientific review of your application/submission as detailed below:

- Nature of Your Application/Submission: ☐ Initial application ☐ Others:
☐ Amendments/changes
- Mode of Review: ☐ Full review ☐ Expedited review
☐ Harmonized review for across-territories multicenter study
☐ Primary review (by <Select full/expedited> review)
☐ Secondary review, with <Select full/expedited> primary review by:
<Select IRB/REC> (see attached approval notice)
- Date of Review/Decision: <Date of meeting/expedited review>
- Document(s) Reviewed: <List document(s), or put "See Schedule 1">
- Reviewer(s): <List reviewer(s), or put "See Schedule 2">

After due review by our reviewer(s), we hereby write to inform you of our decision on your application/submission as follows:

- Decision: ☐ Application approved
☐ Receipt of submission acknowledged without comment
☐ Application disapproved (see opinion(s) below)
☐ Others (see opinion(s) below)

- Opinion(s) (if applicable): <State opinion(s), or put "N/A" if not applicable>
- Regular Progress Report(s) Required: Every <No.> months from the date of initial approval and during the period of the study

You, being the principal investigator and undertaking the ultimate responsibility for the conduct of the study at your study site, are reminded to comply with our requirements and to maintain communication with us during the period of the study by undertaking the principal investigator's responsibilities including (but not limited to):

- supervising your study team and ensuring compliance with the study protocol and all applicable requirements;
- if the study is an industry-sponsored clinical study, submitting to us a copy of the fully executed indemnity agreement satisfying the Hospital Authority's requirement prior to commencement of the study (if it has not been submitted yet);
- observing and complying with all applicable requirements under our standard operating procedure ("IRB/REC SOP"), the Declaration of Helsinki and the ICH GCP (if applicable);
- submitting regular progress report(s) at the required intervals (as specified above) in accordance with the requirements in the IRB/REC SOP;
- not implementing any amendment/change to any approved study document/material without our written approval, except where necessary to eliminate any immediate hazard to the participants or if an amendment/change is only of an administrative or logistical nature;
- notifying us of any new information that may adversely affect the rights, safety or well-being of the participants or the proper conduct of the study;
- reporting any deviation from the study protocol or compliance incident that has occurred during the study and may adversely affect the rights, safety or well-being of any participant in accordance with the requirements in the IRB/REC SOP;
- submitting safety reports on all SAEs observed at your study site or SUSARs reported from outside your study site in accordance with the requirements in the IRB/REC SOP; and
- submitting a final report in accordance with the requirements in the IRB/REC SOP upon completion or termination of the study at your study site.

For the avoidance of doubt, this notice only serves to inform you of our decision from our ethics and scientific evaluation and applies only to the study at the specified study site. It does not release you from your obligation to comply with other applicable management, regulatory and ethics requirements including (but not limited to):

- obtaining the necessary consent from the management of your institution/department in accordance with the requirements of your institution/department;
- if required by Hong Kong laws or regulations, obtaining a certificate for clinical trial through the Hong Kong Department of Health and complying with the associated requirements;
- if required by applicable laws or regulations or relevant organizations or institutions, obtaining other necessary approval(s) or permission(s) (whether local, national or overseas, or of ethical, regulatory, legal or other natures) relevant to the conduct of the study.

Yours sincerely,
for and on behalf of
HKU/HA HKW IRB

<NAME OF CHAIRMAN/DESIGNEE>
<TITLE>

Schedule 1

Documents Reviewed

The documents reviewed by HKU/HA HKW IRB with respect to the said application/submission include:

<List documents. Include version date/no, if applicable>

List of Reviewers

The reviewers participated in reviewing the said application/submission and making the decision on behalf of HKU/HA HKW IRB include:

[illegible]

Appendix 9:

Safety Events Reporting Requirements

Origins of safety events:	<ul style="list-style-type: none"> • <u>Local Site</u>: SAEs observed from participants of a principal investigator's own study site 	<ul style="list-style-type: none"> • <u>Other Site(s)</u>: SUSARs reported from outside a principal investigator's own study site, (e.g. SUSARs reported from another study site in the same multicentre clinical study, or from another clinical study involving the same investigational product/procedure)
Types of safety events that need to be reported to the IRB/REC:	<ul style="list-style-type: none"> • All SAEs 	<ul style="list-style-type: none"> • All SUSARs
Reporting timeline (for phase 1 clinical trials):	<ul style="list-style-type: none"> • Forty-eight (48) hours from the first awareness of a SAE by the principal investigator 	<ul style="list-style-type: none"> • Thirty (30) calendar days from the date of receipt of a SUSAR report by the principal investigator
Reporting timeline (for clinical studies other than phase 1 clinical trials):	<ul style="list-style-type: none"> • <u>Fatal or life-threatening SAEs</u>: Seven (7) calendar days from the first awareness of a SAE by the principal investigator • <u>Other SAEs</u>: Fifteen (15) calendar days from the first awareness of a SAE by the principal investigator 	<ul style="list-style-type: none"> • Thirty (30) calendar days from the date of receipt of a SUSAR report by the principal investigator