



**Free of Charge**

# Mycoplasma Screen Service

## *Mycoplasma*

NO CELL WALL

Cytoplasm

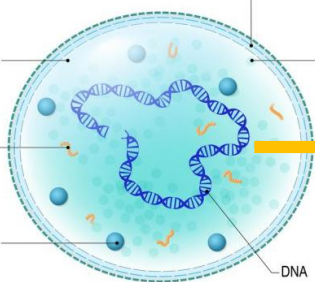
Soluble RNA

Ribosome

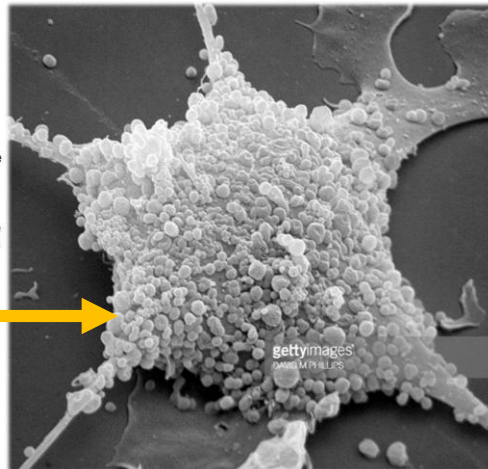
Three layered cellular membrane

Soluble protein

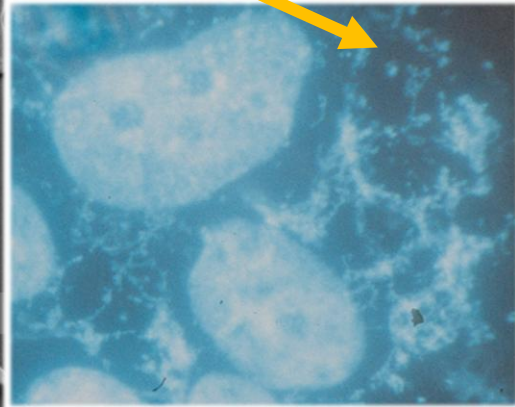
DNA



<https://www.std.gov.org>



<http://www.gettyimages.com/>



Culture of Animal Cells R. Ian Freshney 2011

**Mycoplasmas** contamination on eukaryotic cells culture has disastrous effects as cell content and physiology can be significantly altered. Use of contaminated cells would greatly compromise the accuracy of experimental results. Therefore a regimen of routine testing for the presence of Mycoplasma for all cell stocks and new cultures entering a laboratory is essential to be in place.

We are pleased to announce that Faculty Core Facility will provide PCR detection service for Mycoplasma contamination to research labs in the Faculty of Medicine effective from July 31st, 2018.

This service is provided with free of charge on weekly basis. The result will be kept confidential and only disclose to individual applicant and his/her PI.

## *Sample Submission (Weekly)*

Every **Tuesday**

10am-12:30pm & 2-6pm

L6-12, Laboratory Block, 21 Sassoon Road

### **Preparing your sample:**

1. Culture cells in antibiotics-free medium for at least 3 days
2. Fill up online submission form at <https://goo.gl/forms/RBjUBdHOLqHOMIaM2>
3. Collect total of 3 ml medium per sample in two 2ml micro-centrifuge tubes (1.5ml@)
4. Submit sample(s) in sealed zipper bag label with User name, PI, date of submission and number of samples

\* Max. of 20 samples per group per week

Sample collection location: L6-12



*All are Welcome!*

More Information available at  
[http://www.med.hku.hk/corefac/downloads/Mycoplasma\\_Screen\\_Service\\_at\\_the\\_Faculty\\_Core\\_Facility.pdf](http://www.med.hku.hk/corefac/downloads/Mycoplasma_Screen_Service_at_the_Faculty_Core_Facility.pdf)

Any enquiries, please contact [corefac@hku.hk](mailto:corefac@hku.hk) or 3917 7557

