



**HKU
Med**

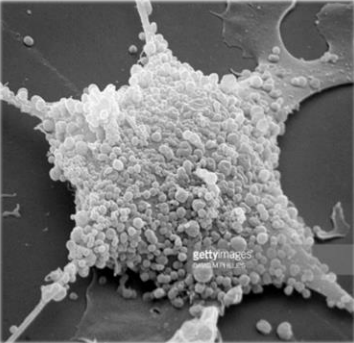
LKS Faculty of Medicine
Centre for PanorOmic Sciences
香港大學泛組學科研中心

http://if.cpos.hku.hk
Tel: (+852) 3917 7555
Email: corefac@hku.hk

Imaging and Flow Cytometry Core

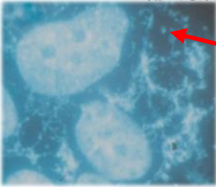
Free of Charge

Mycoplasma Screening Service



MYCOPLASMA CONTAMINATION IN HUMAN TUMOR CELL LINES: EFFECT ON INTERFERON INDUCTION AND SUSCEPTIBILITY TO NATURAL KILLING¹

CHRISTIANE BIRKE, HANS H. PETER,² URSULA LANGENBERG, WERNER J. P. MÜLLER-HERMES, J. HINRICH PETERS, JAN HEITMANN, WOLFGANG LEIBOLD, HELGA DALLÜGGE, EHRENFRIED KRAPP, AND HOLGER KIRCHNER



Culture of Animal Cells R. Ian Freshney 2011

Over 65% of labs has contaminated culture DETECTED!!

Mycoplasma infection significantly alters microarray gene expression profiles

Crispin J. Miller, Heba S. Kassem, Stuart D. Pepper, Yvonne Hey, Timothy H. Ward, and Geoffrey P. Margison
Paterson Institute for Cancer Research, Manchester, UK

Mycoplasma contamination on cells culture have unpredictable disastrous effects, as not only cell morphology but even cell's **GENOME** and **CELL BEHAVIOR [1]** can be significantly altered. The use of contaminated cells would greatly compromise the accuracy of experiment results.

Mycoplasma are small enough to pass normal filters and are easily transmitted by human (respiratory tract flora). They cannot be detected easily through microscopy, therefore a regimen of routine PCR testing for the presence of mycoplasma for all cell cultures is essential to be in place.

Since 2018, Centre for PanorOmic Sciences (CPOS) has been providing free mycoplasma PCR detection service to research labs in Faculty of Medicine and revealed an alarming situation that cell cultures from over **65%** of screened labs are contaminated!! To ensure reliable experiment results could be obtained from your cultured cell, prepare and submit samples (medium/DNA/swab) for screening now with no more delay.

To mitigate the catastrophic consequences of mycoplasma contamination, discard/replace of contaminated culture is highly recommended but effective drugs to eliminate contamination are available from CPOS upon request.

This service is provided with free of charge on weekly basis. The result will be kept confidential and only disclose to individual applicant and his/her PI.

Sample Submission (Weekly)

Every Tuesday

10am – 5pm

L6-12, Laboratory Block, 21 Sassoon Road

All are Welcome!

Samples can be kept at 4°C prior to submission
More Information available at

http://www.med.hku.hk/corefac/downloads/Mycoplasma_Screening_Service_at_the_CPOS.pdf

Any enquiries, please contact corefac@hku.hk or 3917 7557



Sample collection location: L6-12



[1] References: http://www.med.hku.hk/corefac/downloads/Mycoplasma_Screening_References.pdf